



Istruzioni generali
General instructions

2



Raccordi automatici
One touch fittings

4



Regolatori di flusso
Speed controllers

18



Valvole manuali a 3 vie
Hand valves

21



Rubinetti
Ball valves

22



Valvole ausiliarie
Auxiliary valves

24



Raccordi tradizionali in ottone
Brass standard fittings

25



Raccorderia a calzamento
Quick fittings

34



Silenziatori
Silencers




39





Manometri
Gauges

41

Classifica delle avvertenze


-  **PERICOLO** Rischio di morte o di ferite gravi. (la condizione più pericolosa).
-  **AVVERTENZA** Potenziale rischio di pericolo, morte o ferite gravi.
-  **CAUTELE** Potenziale rischio di pericolo e di danno economico.

Precauzioni comuni


-  **PERICOLO** Non usare mai nei casi seguenti:
 1. Per apparecchi ad uso medico destinati alla salvaguardia della salute.
 2. Per apparecchi per la movimentazione di persone.
 3. Per apparecchi che richiedano essenziale sicurezza.
-  **AVVERTENZA** Non usare mai nei seguenti ambienti:
 1. Utilizzo per applicazioni diverse da quelle originariamente previste.
 2. Applicazioni con eccessiva vibrazione, shock, rotazione e curvatura.
 3. Applicazioni che contengono gas corrosivo, gas infiammabile, sostanze chimiche, acqua di mare, acqua e vapore.


Non smontare mai o modificare il raccordo: questo potrebbe causare malfunzionamento o perdita. Prima di intervenire sul raccordo, assicurarsi di togliere aria.

Non manomettere mai lo spintore del raccordo quando è in pressione.

-  **CAUTELE** Non assemblare il raccordo con parti di altri produttori, questo può causare perdita o malfunzionamento.

Precauzioni nell'uso dei raccordi non mancare mai di verificare quanto segue:

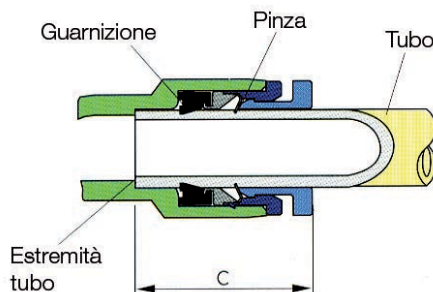
-  **AVVERTENZA**
 1. Non usare mai per fluidi diversi da aria.
 2. Non usare in ambienti con presenza di fuoco o scintille.
 3. Accertarsi di usare giunti rotanti per evitare danno o perdita in caso di rotazioni frequenti.
 4. Prima dell' impiego dei raccordi, verificare i requisiti di prevenzione dell'elettricità statica.
 5. Evitare eccessiva curvatura, torsione e trazione sui raccordi, oltre i limiti previsti.

-  **CAUTELE**
 1. Accertarsi di soddisfare le seguenti condizioni per il tubo, altrimenti si potrebbero verificare perdite d'aria o problemi nell'applicazione (tab. 1).
 2. Cautela nell'applicazione del tubo:
 - Assicurarsi che la sezione del tubo sia tagliata ad angolo retto.
 - Assicurarsi che non ci siano segni all'esterno del tubo.
 - Assicurarsi di fare riferimento a quanto segue per l'applicazione e la rimozione del tubo (dis. 1)
 - I raccordi AIRCOMP sono fatti per un inserimento del tubo nel raccordo in 2 step. Il primo step consiste nel passare attraverso la pinza e il secondo step consiste nell'arrivare alla guarnizione.
 - Assicurarsi che il secondo step sia stato eseguito.
 3. Cautela nel distacco del tubo:
 - Prima di staccare il tubo, assicurarsi che la pressione all'interno del tubo sia zero.
 - Prima di staccare il tubo, tirarlo dopo aver premuto lo spintore in modo uguale su entrambi i lati.
 - Una pressione disomogenea potrebbe graffiare il tubo a causa della apertura insufficiente della pinza, il che causerebbe perdita di aria.
 - Assicurarsi di non scuotere o fare una rotazione di 360° quando si scollega il tubo. Questo potrebbe graffiare il tubo.
 4. Precauzioni nell'avvitamento del raccordo:
 - Nel montare il raccordo, utilizzare chiavi appropriate.
 - Nell'avvitare il raccordo, per favore fate riferimento alla "coppia di serraggio suggerita" (tab. 2).
 - Se la coppia di serraggio è superiore a quella suggerita, questo potrebbe causare danno o perdita d'aria.
 - Se la coppia di serraggio è inferiore a quella suggerita, questo potrebbe causare perdita d'aria.

tab. 1

DIMENSIONE	tubo POLIURETANO	tubo NYLON
Ø 3mm	± 0.10	± 0.08
Ø 4mm	± 0.10	± 0.08
Ø 6mm	± 0.12	± 0.10
Ø 8mm	± 0.12	± 0.10
Ø 10mm	± 0.15	± 0.12
Ø 12mm	± 0.15	± 0.12
Ø 16mm	± 0.15	± 0.15




dis. 1





tab. 2

Tipo di Filetto	Dimensione Filetto	Coppia di serraggio (Kgf - cm)
Filetto metrico	M 5	15 - 19
Filetto conico prtefonato	R 1/8	70 - 90
	R 1/4	120 - 140
	R 3/8	220 - 240
	R 1/2	280 - 300


Classification of Warning Indications

-  **DANGER** Risk of death or serious injury. (the most dangerous condition).
-  **WARNING** Potential risk of danger, death or serious injury. (potential danger)
-  **CAUTION** Potential risk of danger and of financial damage.

Common precautions


-  **DANGER** Never use for the following:
 1. As medical equipment for the purpose of safeguard of human health.
 2. As equipment for the movement of people.
 3. As equipment requiring essential safety.
-  **WARNING** Never use in the following environment:
 1. Using for applications other than originally intended.
 2. Application having excessive vibration, shock, rotation and curve.
 3. Applications containing corrosive gas, inflammable/flammable gas, chemicals, sea water, water and vapour.


Never disassemble or modify the Fitting: this may cause malfunctioning or leakage.
 Before any intervention on the Fitting, make sure that air pressure has been removed.
 Never tamper with the sleeve of fitting when pressure is on.

-  **CAUTION**
 Never assemble the Fitting with parts from other manufactures: this may cause leakage or malfunctioning.

Precautions in Fittings use

Never fail to check the following

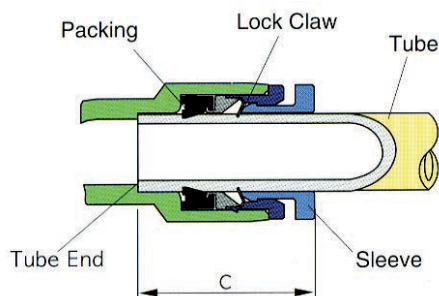
-  **WARNING**
 1. Never use for fluids other than air.
 2. Never use in any environment in presence of fire or sparkles.
 3. Be sure to use with Rotary Joint to prevent damage or leakage in case of frequent rotations.
 4. Before using the Fittings, be sure to check static electricity prevention requirements.
 5. Avoid excessive bending, twisting and drawing on fittings, beyond provided limits.

-  **CAUTION**
 1. Be sure to meet the following conditions for the tube, otherwise it may cause leakage of air or problem of the application (tab. 1).
 2. Cautions in the application of tube:
 Be sure that the section of tube is cut at right angle. Make sure that there is no mark on the outside of the tube.
 Be sure to refer to the following for application and removal of tube. AIRCOMP equipment is made to follow a 2-step insertion of tubing into the fitting. The first step goes past the Lock Claws and the second step goes into the Packing.
 Make sure the second step has been acquired. (dis. 1)
 3. Cautions on disconnecting tube:
 Before disconnecting tube, be sure to confirm that the pressure inside the tube is zero.
 Before disconnecting tube, pull it out after pressing the sleeve equally on both sides.
 Unequal pressing strength will make scratch on tube by insufficient opening of lock claws, this will cause air leakage.
 Be sure not to shake or make 360° rotation when disconnecting the tube. This might scratch the tube.
 4. Precautions in screwing the Fitting:
 When assembling the Fitting, use the suitable tools.
 When screwing the Fitting, please refer to the "Recommended Torque" hereunder (tab 2).
 If torque is higher than the recommended, this may cause damage or air leakage.
 If torque is lower than the recommended, this may cause air leakage.

tab. 1

SIZE	POLYURETHANE tube	NYLON tube
Ø 3mm	± 0.10	± 0.08
Ø 4mm	± 0.10	± 0.08
Ø 6mm	± 0.12	± 0.10
Ø 8mm	± 0.12	± 0.10
Ø 10mm	± 0.15	± 0.12
Ø 12mm	± 0.15	± 0.12
Ø 16mm	± 0.15	± 0.15

dis. 1



tab. 2

Thread type	Thread Size	Torque (Kgf - cm)
Metric Thread	M 5	15 - 19
Taper Thread Teflon-coated	R 1/8	70 - 90
	R 1/4	120 - 140
	R 3/8	220 - 240
	R 1/2	280 - 300



Dati tecnici - Technical data

Applicazioni - Applications	aria compressa/vuoto - compressed air/vacuum
Fluido - Fluid	aria (no altri fluidi) - air (no other gases or liquids)
Pressione di lavoro - Working pressure	0 - 16 bar
Depressione - Vacuum	-750 mmHg (10 Torr)
Range di temperatura - Temperature range	-20 ÷ 80°C
Tubi consigliati - Recommended hoses	Nylon, Poliuretano - Nylon, Polyurethane

I raccordi di collegamento automatici in tecnopolimero Aircomp permettono il collegamento istantaneo dei tubi flessibili di diverse tipologie. Sono disponibili nella versione filettata conica preteflonata, cilindrica e nella versione di congiunzione (tubo/tubo).

The technopolymer Aircomp push-in fittings allow a fast connections of different flexible hoses types. These fittings are available in different tread versions: conical with teflon, cylindrical and intermediate (hose/hose).

Guida alle referenze Guide to references

301 . 01 . 08 . 14

Serie Line

301 = Raccordo conico
Conical fitting
Raccordo intermedio
Intermediate fitting

302 = Raccordo cilindrico
Cylindrical fitting

Tipo di raccordo Fitting type

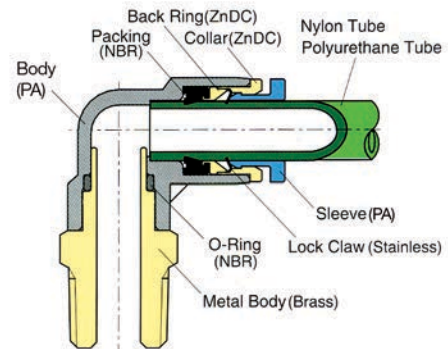
Consultare le tabelle alle pagine che seguono
Please check it in following pages

Filetto Thread Size

18 = 1/8
14 = 1/4
38 = 3/8
12 = 1/2
M5 = M5

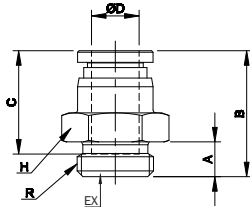
Ø Tubo Tube diameter

04 = tubo 4 mm
4mm tube
06 = tubo 6 mm
6mm tube
08 = tubo 8 mm
8mm tube
10 = tubo 10 mm
10mm tube
12 = tubo 12 mm
12mm tube



302.01

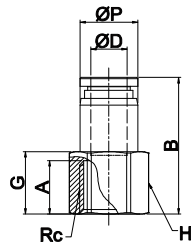
Maschio dritto automatico cilindrico
Straight male



CODICE-CODE	ØD	R	A	B	H1	EX	Bag Qty
302.01.04.M5	4	M5	4	20,1	8	2	10
302.01.04.18		G1/8	5	18,4	13	3	10
302.01.04.14		G1/4	6	18,1	16	3	10
302.01.06.M5	6	M5	4	21,8	11	2	10
302.01.06.18		G1/8	5	23,1	13	4	10
302.01.06.14		G1/4	6	19,8	16	4	10
302.01.08.18	8	G1/8	5	26	13	5	10
302.01.08.14		G1/4	6	21,7	16	6	10
302.01.08.38		G3/8	7	22,7	20	6	10
302.01.10.14	10	G1/4	6	28,3	16	6	10
302.01.10.38		G3/8	7	24,3	20	8	10
302.01.10.12		G1/2	8,5	24,8	24	8	5
302.01.12.14	12	G1/4	6	32,4	19	6	5
302.01.12.38		G3/8	7	32,4	20	9	5
302.01.12.12		G1/2	8,5	28,9	24	10	5

302.23

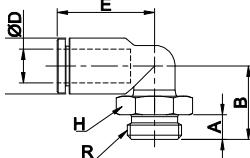
Femmina dritta automatica cilindrica
Straight female



CODICE-CODE	ØD	R	ØP	G	A	B	H	Bag Qty
302.23.04.18	4	G1/8	8,8	11	9	24,4	13	10
302.23.04.14		G1/4	8,8	14	12	27,4	16	10
302.23.06.18	6	G1/8	11	11	9	25,4	13	10
302.23.06.14		G1/4	11	14	12	28,4	16	10
302.23.08.18	8	G1/8	13	10	9	27,7	13	10
302.23.08.14		G1/4	13	14	12	30,7	16	10
302.23.08.38		G3/8	13	15	13	31,7	19	10
302.23.10.14	10	G1/4	15,5	13	12	32,4	16	10
302.23.10.38		G3/8	15,5	15	13	33,4	19	5
302.23.10.12		G1/2	15,5	18	16	36,4	24	5
302.23.12.14	12	G1/4	18,8	12	12	35,4	19	5
302.23.12.38		G3/8	18,8	15	13	36,4	19	5
302.23.12.12		G1/2	18,8	18	16	39,4	24	5

302.02

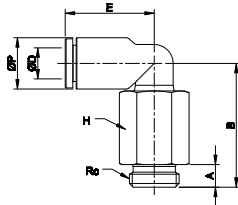
Curve 90° automatica cilindrica
Elbow male



CODICE-CODE	ØD	R	ØP	A	B	E	H	Bag Qty
302.02.04.M5	4	M5	9	4	14,6	17,1	9	10
302.02.04.18		G1/8	9	5	14,6	17,1	13	10
302.02.04.14		G1/4	9	6	15,3	17,1	16	10
302.02.06.M5	6	M5	11,2	4	15,7	18	9	10
302.02.06.18		G1/8	11,2	5	15,7	18	13	10
302.02.06.14		G1/4	11,2	6	16,4	18	16	10
302.02.08.18	8	G1/8	13,6	5	19,6	23,6	13	10
302.02.08.14		G1/4	13,6	6	17,8	23,6	16	10
302.02.08.38		G3/8	13,6	7	18,8	23,6	20	10
302.02.10.14	10	G1/4	16,3	6	22,6	25	16	5
302.02.10.38		G3/8	16,3	7	21,1	25	20	5
302.02.10.12		G1/2	16,3	8,5	22,6	25	24	5
302.02.12.14	12	G1/4	19,7	6	24,5	32,2	16	5
302.02.12.38		G3/8	19,7	7	23	32,2	20	5
302.02.12.12		G1/2	19,7	8,5	24,5	32,2	24	5

302.10

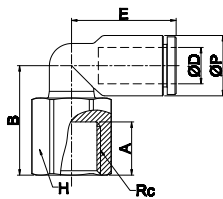
Curva 90° automatica cilindrica lunga
Extra elbow male



CODICE-CODE	ØD	R	ØP	A	B	E	H	Bag Qty
302.10.04.M5	4	M5	9	4	27,1	17,1	9	10
302.10.04.18		G1/8	9	5	27,1	17,1	13	10
302.10.04.14		G1/4	9	6	27,8	17,1	16	10
302.10.06.M5	6	M5	11,2	4	28,2	18	9	10
302.10.06.18		G1/8	11,2	5	28,2	18	13	10
302.10.06.14		G1/4	11,2	6	28,9	18	16	10
302.10.08.18	8	G1/8	13,6	5	34,6	23,6	13	10
302.10.08.14		G1/4	13,6	6	32,8	23,6	16	10
302.10.08.38		G3/8	13,6	7	33,8	23,6	20	5
302.10.10.14	10	G1/4	16,3	6	43,8	25	16	5
302.10.10.38		G3/8	16,3	7	42,3	25	20	5
302.10.10.12		G1/2	16,3	8,5	43,8	25	24	5
302.10.12.14	12	G1/4	19,7	6	45,65	32,2	16	5
302.10.12.38		G3/8	19,7	7	44,15	32,2	20	5
302.10.12.12		G1/2	19,7	8,5	45,65	32,2	24	5

302.29

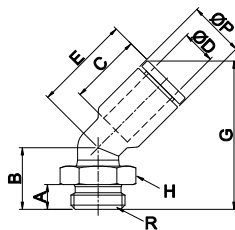
Curva 90° femmina automatica cilindrica
Elbow female



CODICE-CODE	ØD	R	ØP	A	B	E	H	Bag Qty
302.29.04.18	4	G1/8	9	9	18,6	17,1	13	10
302.29.04.14		G1/4	9	12	21,6	17,1	16	10
302.29.06.18	6	G1/8	11,2	9	19,7	18	13	10
302.29.06.14		G1/4	11,2	12	22,7	18	16	10
302.29.08.18	8	G1/8	13,6	9	21,7	23,6	13	10
302.29.08.14		G1/4	13,6	12	24,7	23,6	16	10
302.29.08.38		G3/8	13,6	13	25,7	23,6	19	5
302.29.10.14	10	G1/4	16,3	12	26	25	16	5
302.29.10.38		G3/8	16,3	13	27	25	19	5
302.29.10.12		G1/2	16,3	16	30	25	24	5
302.29.12.14	12	G1/4	19,7	12	27,9	32,2	16	5
302.29.12.38		G3/8	19,7	13	28,9	32,2	19	5
302.29.12.12		G1/2	19,7	16	31,9	32,2	24	5

302.61

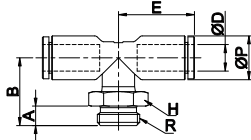
Curva 45° automatica cilindrica
45° Elbow male



CODICE-CODE	ØD	R	ØP	A	B	C	E	H	G	Bag Qty
302.61.04.M5	4	M5	10,4	4	22	16	18,1	10	34,76	10
302.61.04.18		G1/8	10,4	5	23,6	16	18,1	10	38,76	10
302.61.04.14		G1/4	10,4	6	25,6	16	18,1	12	40,36	10
302.61.06.M5	6	M5	12,4	4	21,9	17	20,1	12	36,08	10
302.61.06.18		G1/8	11,2	5	13,7	15,5	18	13	30,1	10
302.61.06.14		G1/4	11,2	6	14,4	15,5	18	16	30,8	10
302.61.08.18	8	G1/8	13,6	5	16,8	17,8	23,6	13	37,91	10
302.61.08.14		G1/4	13,6	6	15	17,8	23,6	16	36,11	10
302.61.08.38		G3/8	13,6	7	16	17,8	23,6	20	37,11	10
302.61.10.14	10	G1/4	16,3	6	18,6	19,4	25	16	41,65	5
302.61.10.38		G3/8	16,3	7	17,1	19,4	25	20	40,15	5
302.61.10.12		G1/2	16,3	8,5	18,6	19,4	25	24	41,65	5
302.61.12.14	12	G1/4	19,7	6	20,1	22,4	32,2	16	49,41	5
302.61.12.38		G3/8	19,7	7	18,6	22,4	32,2	20	47,91	5
302.61.12.12		G1/2	19,7	8,5	20,1	22,4	32,2	24	49,41	5

302.03

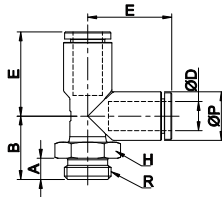
"T" centrale maschio automatico cilindrico
"T" central male



CODICE-CODE	ØD	R	ØP	A	B	E	H	Bag Qty
302.03.04.M5	4	M5	9	4	16,6	17,1	9	10
302.03.04.18		G1/8	9	5	16,6	17,1	13	10
302.03.04.14		G1/4	9	6	17,3	17,1	16	10
302.03.06.M5	6	M5	11,2	4	17,7	18	9	10
302.03.06.18		G1/8	11,2	5	17,7	18	13	10
302.03.06.14		G1/4	11,2	6	18,4	18	16	10
302.03.08.18	8	G1/8	13,6	5	22,8	23,6	13	10
302.03.08.14		G1/4	13,6	6	21	23,6	16	10
302.03.08.38		G3/8	13,6	7	22	23,6	20	5
302.03.10.14	10	G1/4	16,3	6	24,8	25	16	5
302.03.10.38		G3/8	16,3	7	23,3	25	20	5
302.03.10.12		G1/2	16,3	8,5	24,8	25	24	5
302.03.12.14	12	G1/4	19,7	6	26,5	32,2	16	5
302.03.12.38		G3/8	19,7	7	25	32,2	20	5
302.03.12.12		G1/2	19,7	8,5	26,5	32,2	24	5

302.07

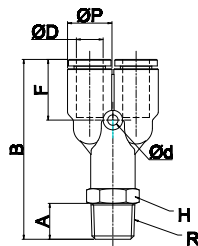
"T" laterale maschio automatico cilindrico
"T" lateral male



CODICE-CODE	ØD	R	ØP	A	B	E	H	Bag Qty
302.07.04.M5	4	M5	9	4	14,6	17,1	9	10
302.07.04.18		G1/8	9	5	14,6	17,1	13	10
302.07.04.14		G1/4	9	6	15,3	17,1	16	10
302.07.06.M5	6	M5	11,2	4	15,7	19	9	10
302.07.06.18		G1/8	11,2	5	15,7	19	13	10
302.07.06.14		G1/4	11,2	6	16,4	19	16	10
302.07.08.18	8	G1/8	13,6	5	19,6	23,6	13	10
302.07.08.14		G1/4	13,6	6	17,8	23,6	16	10
302.07.08.38		G3/8	13,6	7	18,8	23,6	20	5
302.07.10.14	10	G1/4	16,3	6	22,6	25	16	5
302.07.10.38		G3/8	16,3	7	21,1	25	20	5
302.07.10.12		G1/2	16,3	8,5	22,6	25	24	5
302.07.12.14	12	G1/4	19,7	6	24,5	32,2	16	5
302.07.12.38		G3/8	19,7	7	23	32,2	20	5
302.07.12.12		G1/2	19,7	8,5	24,5	32,2	24	5

302.09

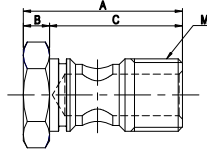
"Y" maschio automatico cilindrico
"Y" male



CODICE-CODE	ØD	R	ØP	A	B	Ød	F	H	Bag Qty
302.09.04.M5	4	M5	9	4	37,4	3,2	13,2	9	10
302.09.04.18		G1/8	9	5	37,4	3,2	13,2	13	10
302.09.04.14		G1/4	9	6	38,1	3,2	13,2	16	10
302.09.06.M5	6	M5	11,2	4	40,5	3,2	14,1	11	10
302.09.06.18		G1/8	11,2	5	40,5	3,2	14,1	13	10
302.09.06.14		G1/4	11,2	6	41,2	3,2	14,1	16	10
302.09.08.18	8	G1/8	13,6	5	48,9	3,2	18,6	13	10
302.09.08.14		G1/4	13,6	6	50,1	3,2	18,6	16	10
302.09.08.38		G3/8	13,6	7	51,1	3,2	18,6	20	5
302.09.10.14	10	G1/4	16,3	6	54,5	4,2	18	17	10
302.09.10.38		G3/8	16,3	7	53	4,2	18	20	10
302.09.10.12		G1/2	16,3	8,5	54,5	4,2	18	24	10
302.09.12.14	12	G1/4	19,7	6	64,4	4,2	23,9	19	10
302.09.12.38		G3/8	19,7	7	62,9	4,2	23,9	20	10
302.09.12.12		G1/2	19,7	8,5	64,4	4,2	23,9	24	10

302.53

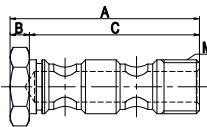
Vite cava singola
Single screw



CODICE-CODE	M	A	B	C	H	Bag Qty
302.53.18	G1/8	26,5	4	22,5	14	10
302.53.14	G1/4	32	5	27	17	10

302.54

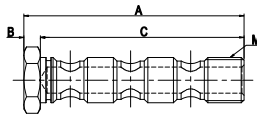
Vite cava doppia
Double screw



CODICE-CODE	M	A	B	C	H	Bag Qty
302.54.18	G1/8	43,5	4	39,5	14	10
302.54.14	G1/4	51	5	46	17	10

302.55

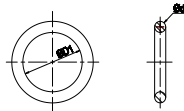
Vite cava tripla (solo aria)
Triple screw (only air)



CODICE-CODE	M	A	B	C	H	Bag Qty
302.55.18	G1/8	60,5	4	56,5	14	10
302.55.14	G1/4	70	5	65	17	10

302.56

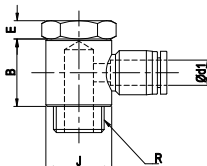
O-ring di tenuta
Ring sealing



CODICE-CODE	ØD1	Ød	Bag Qty
302.56.18	G1/8	1,5	10
302.56.14	G1/4	1,5	10

302.51

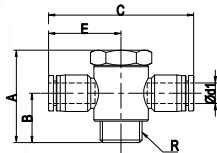
Anello per vite cava
Single banjo ring



CODICE-CODE	ØD1	R	B	E	Bag Qty
302.51.04.18	4	G1/8	14	4	10
302.51.06.18	6	G1/8	14	4	10
302.51.06.14		G1/4	17,5	5	10
302.51.08.18	8	G1/8	14	4	10
302.51.08.14		G1/4	17,5	5	10
302.51.08.38		G3/8	19,5	6	5

302.52

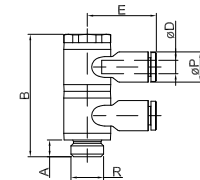
Anello doppio per vite cava
"T" single banjo ring



CODICE-CODE	ØD1	R	A	B	C	Bag Qty
302.52.04.18	4	G1/8	26,5	14	46,8	10
302.52.06.18	6	G1/8	26,5	14	49,6	5
302.52.06.14		G1/4	32	17,5	51,8	5
302.52.08.18	8	G1/8	26,5	14	52,6	5
302.52.08.14		G1/4	32	17,5	52,6	5
302.52.08.38		G3/8	36,5	19,5	52,6	5

302.57

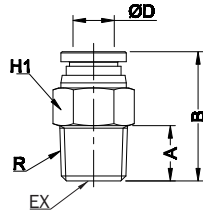
Doppio banjo automatico in linea cilindro
Double elbow



CODICE-CODE	ØD	R	ØP	A	B	E	H	Bag Qty
302.57.04.18	4	1/8	9	5	36,5	21,5	13	13
302.57.04.14		1/4	9	6	45	24	16	16
302.57.06.18	6	1/8	11,2	5	36,5	22,5	13	13
302.57.06.14		1/4	11,2	6	45	25	16	16
302.57.08.18	8	1/8	13,6	5	36,5	25,6	13	13
302.57.08.14		1/4	13,6	6	45	28,1	16	16
302.57.08.38		3/8	13,6	7	53	29,8	20	20
302.57.10.14	10	1/4	16,3	6	45	28,9	16	16
302.57.10.38		3/8	16,3	7	53	30,6	20	20
302.57.10.12	12	1/2	16,3	8,5	57,5	32,9	24	24
302.57.12.38		3/8	19,7	7	53	35,9	20	20
302.57.12.12		1/2	19,7	8,5	57,5	38,2	24	24

301.01

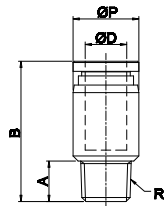
Maschio dritto automatico conico
Straight male



CODICE-CODE	ØD	R	A	B	H1	EX	Bag Qty
301.01.04.18	4	1/8	8	20,1	10	3	10
301.01.04.14		1/4	11	20,1	14	3	10
301.01.06.18	6	1/8	8	22	11	4	10
301.01.06.14		1/4	11	22,8	14	4	10
301.01.08.18	8	1/8	8	27,7	13	5	10
301.01.08.14		1/4	11	25,7	14	6	10
301.01.08.38		3/8	12	23,7	17	6	10
301.01.10.14	10	1/4	11	32,4	17	6	10
301.01.10.38		3/8	12	28,4	17	8	10
301.01.10.12		1/2	15	27,3	21	8	10
301.01.12.14	12	1/4	11	35,4	19	6	10
301.01.12.38		3/8	12	31,8	19	8	10
301.01.12.12		1/2	15	33,8	21	8	5

301.22

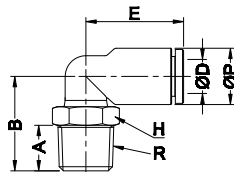
Maschio tondo dritto aut. Conico
Straight round male



CODICE-CODE	ØD	R	ØP	A	B	H	Bag Qty
301.22.04.18	4	1/8	10	8	20,1	3	10
301.22.04.14		1/4	13,5	11	20,1	3	10
301.22.06.18	6	1/8	11	8	22	4	10
301.22.06.14		1/4	13,5	11	22,8	4	10
301.22.08.18	8	1/8	13	8	27,7	5	10
301.22.08.14		1/4	13,5	11	25,7	6	10
301.22.08.38		3/8	17	12	23,7	6	10
301.22.10.14	10	1/4	15,5	11	32,4	6	10
301.22.10.38		3/8	17	12	28,4	8	10
301.22.10.12		1/2	21	15	27,3	8	10
301.22.12.14	12	1/4	18,8	11	35,4	6	10
301.22.12.38		3/8	18,8	12	31,8	8	10
301.22.12.12		1/2	21	15	33,8	8	5

301.02

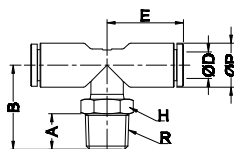
Curva 90° automatico conica
Elbow male



CODICE-CODE	ØD	R	ØP	A	B	E	H	Bag Qty
301.02.04.18	4	1/8	9	8	17,8	17,1	10	10
301.02.04.14		1/4	9	11	20,8	17,1	14	10
301.02.06.18	6	1/8	11,2	8	18,9	18	10	10
301.02.06.14		1/4	11,2	11	21,9	18	14	10
301.02.08.18	8	1/8	13,6	8	20,3	23,6	10	10
301.02.08.14		1/4	13,6	11	22,8	23,6	14	10
301.02.08.38		3/8	13,6	12	23,8	23,6	17	10
301.02.10.14	10	1/4	16,3	11	26,6	25	17	5
301.02.10.38		3/8	16,3	12	26,1	25	17	5
301.02.10.12		1/2	16,3	15	29,1	25	21	5
301.02.12.14	12	1/4	19,7	11	28,5	32,2	17	5
301.02.12.38		3/8	19,7	12	28	32,2	17	5
301.02.12.12		1/2	19,7	15	31	32,2	21	5

301.03

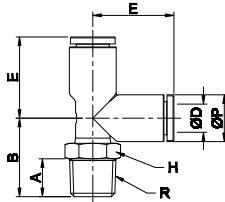
Centrale maschio automatico conico
"T" central male



CODICE-CODE	ØD	R	ØP	A	B	E	H	Bag Qty
301.03.04.18	4	1/8	9	8	19,8	17,1	10	10
301.03.04.14		1/4	9	11	22,8	17,1	14	10
301.03.06.18	6	1/8	11,2	8	20,9	18	10	10
301.03.06.14		1/4	11,2	11	23,9	18	14	10
301.03.08.18	8	1/8	13,6	8	23,5	23,6	10	10
301.03.08.14		1/4	13,6	11	26	23,6	14	10
301.03.08.38		3/8	13,6	12	27	23,6	17	5
301.03.10.14	10	1/4	16,3	11	28,8	25	17	5
301.03.10.38		3/8	16,3	12	28,3	25	17	5
301.03.10.12		1/2	16,3	15	31,3	25	21	5
301.03.12.14	12	1/4	19,7	11	30,5	32,2	17	5
301.03.12.38		3/8	19,7	12	30	32,2	17	5
301.03.12.12		1/2	19,7	15	33	32,2	21	5

301.07

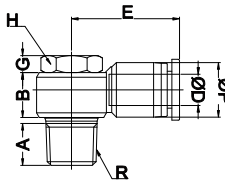
Laterale maschio automatico conico
"T" lateral male



CODICE-CODE	ØD	R	ØP	A	B	E	H	Bag Qty
301.07.04.18	4	1/8	9	8	17,8	17,1	10	10
301.07.04.14		1/4	9	11	20,8	17,1	14	10
301.07.06.18	6	1/8	11,2	8	18,9	19	10	10
301.07.06.14		1/4	11,2	11	21,9	19	14	10
301.07.08.18	8	1/8	13,6	8	20,3	23,6	10	10
301.07.08.14		1/4	13,6	11	22,8	23,6	14	10
301.07.08.38		3/8	13,6	12	23,8	23,6	17	5
301.07.10.14	10	1/4	16,3	11	26,6	25	17	5
301.07.10.38		3/8	16,3	12	26,1	25	17	5
301.07.10.12		1/2	16,3	15	29,1	25	21	5
301.07.12.14	12	1/4	19,7	11	28,5	32,2	17	5
301.07.12.38		3/8	19,7	12	28	32,2	17	5
301.07.12.12		1/2	19,7	15	31	32,2	21	5

301.25

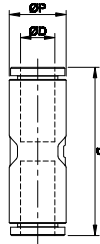
Banjo automatico maschio conico
Banjo male



CODICE-CODE	ØD	R	ØP	A	B	E	H	G	Bag Qty
301.25.04.18	4	1/8	10,4	8	12	22,4	10	4	10
301.25.04.14		1/4	10,4	11	11,8	24,4	10	4,5	10
301.25.06.18	6	1/8	12,4	8	12	23,6	10	4	10
301.25.06.14		1/4	12,4	11	11,8	25,7	14	4,5	10
301.25.08.18	8	1/8	14,4	8	12	25	10	4	10
301.25.08.14		1/4	14,4	11	11,8	28,2	14	4,5	10
301.25.08.38		3/8	14,4	12	15,5	28,6	19	5	5
301.25.10.14	10	1/4	17,6	11	11,8	31,2	14	4,5	5
301.25.10.38		3/8	17,6	12	15,5	31,6	19	5	5
301.25.10.12		1/2	17,6	15	17,7	34,5	24	5	5
301.25.12.14	12	1/4	21	11	11,8	34,8	14	4,5	5
301.25.12.38		3/8	21	12	15,5	36	19	5	5
301.25.12.12		1/2	21	15	17,7	36	24	5	5

301.04

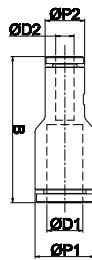
Intermedio automatico
Straight union



CODICE-CODE	ØD	ØP	B	Bag Qty
301.04.04.04	4	9	30,2	10
301.04.06.06	6	11.2	32	10
301.04.08.08	8	13.6	40,2	10
301.04.10.10	10	16.3	40	10
301.04.12.12	12	19.7	54,8	5

301.30

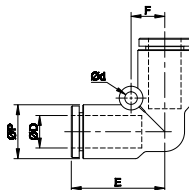
Intermedio automatico diritto ridotto
Reducer straight union



CODICE-CODE	ØD1	ØD2	ØP1	ØP2	B	Bag Qty
301.30.06.04	6	4	11.2	9	31,5	10
301.30.08.04	8	4	13.6	9	33,3	10
301.30.08.06	8	6	13.6	11.2	34,3	10
301.30.10.06	10	6	16.3	11.2	35,9	10
301.30.10.08	10	8	16.3	13.6	38,2	10
301.30.12.08	12	8	19.7	13.6	41,2	5
301.30.12.10	12	10	19.7	16.3	42,8	5

301.05

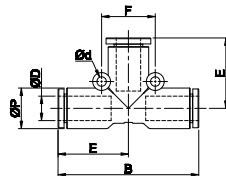
Curva 90° intermedia automatica
Elbow union



CODICE-CODE	ØD	ØP	B	F	Ød	Bag Qty
301.05.04.04	4	9	17,1	6	3,2	10
301.05.06.06	6	11.2	19	6,7	3,2	10
301.05.08.08	8	13.6	23,6	8,5	3,2	10
301.05.10.10	10	16.3	25	10	4,2	5
301.05.12.12	12	19.7	32,2	12	4,2	5

301.06

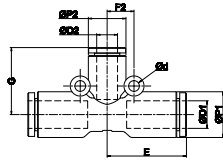
T intermedio automatico
"T" union



CODICE-CODE	ØD	ØP	B	E	F	Ød	Bag Qty
301.06.04.04	4	9	34,2	17,1	12	3,2	10
301.06.06.06	6	11.2	38	19	13	3,2	10
301.06.08.08	8	13.6	47,2	23,6	18	3,2	10
301.06.10.10	10	16.3	50	25	24	4,2	5
301.06.12.12	12	19.7	64,4	32,2	28	4,2	5

301.57

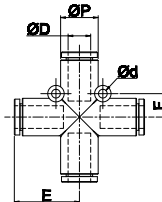
T intermedio automatico ridotto
"T" reducer union



CODICE-CODE	ØD1	ØD2	ØP1	ØP2	E	F2	G	Ød	Bag Qty
301.57.06.04	6	4	11,2	9	19	6	18,1	3,2	10
301.57.08.06	8	6	13,6	11,2	23,6	8	20	3,2	10
301.57.10.08	10	8	16,3	13,6	25	9,5	24,1	4,2	5
301.57.12.10	12	10	19,7	16,3	32,2	10	25,5	4,2	5

301.21

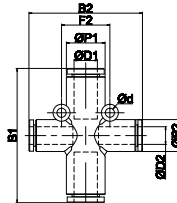
Croce intermedia automatica
Cross union



CODICE-CODE	ØD	ØP	E	F	Ød	Bag Qty
301.21.04	4	9	17,1	6	3,2	10
301.21.06	6	11,2	19	6,5	3,2	10
301.21.08	8	13,6	23,6	8,5	3,2	5
301.21.10	10	16,3	25	10	4,2	5
301.21.12	12	19,7	32,2	12	4,2	5

301.58

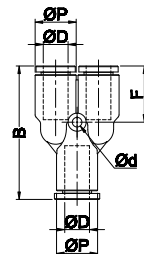
Croce intermedia ridotta 2/2
2/2 Cross union



CODICE-CODE	ØD1	ØD2	ØP1	ØP2	B1	B2	F2	Ød	Bag Qty
301.58.08.06	8	6	13,6	11,2	47,2	39,9	17	3,2	5
301.58.10.08	10	8	16,3	13,6	50	48,2	20	4,2	5
301.58.12.10	12	10	19,7	16,3	64,4	51	24	4,2	5

301.08

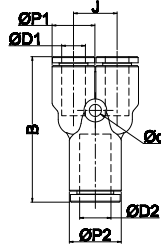
Y intermedio automatico
"Y" union



CODICE-CODE	ØD	ØP	B	F	Ød	Bag Qty
301.08.04.04	4	9	31,2	13,2	3,2	10
301.08.06.06	6	11,2	34,7	14,1	3,2	10
301.08.08.08	8	13,6	44,2	18,6	3,2	10
301.08.10.10	10	16,3	46	18	4,2	5
301.08.12.12	12	19,7	56,8	23,9	4,2	5

301.11

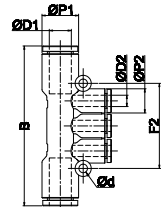
Y intermedio automatico ridotto
"Y" reducer



CODICE-CODE	ØD1	ØD2	ØP1	ØP2	B	Ød	F	J	Bag Qty
301.11.06.04	4	6	9	11,2	32,5	3,2	13,2	9,3	10
301.11.08.04		8	11,2	13,6	38,5	3,2	14,1	11,4	10
301.11.08.06	6	8	11,2	13,6	38,5	3,2	14,1	11,4	10
301.11.10.08	8	10	13,6	16,3	43,2	3,2	17,8	14,2	5
301.11.12.10	10	12	16,3	19,7	50,9	4,2	18	17	5

301.12

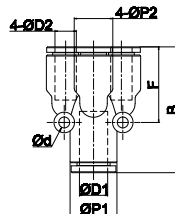
T multiplo automatico ridotto
"T" multiple reducer



CODICE-CODE	ØD1	ØD2	ØP1	ØP2	B	Ød	F2	Bag Qty
301.12.06.04	6	4	11,2	9	54,7	3,2	30,6	5
301.12.08.04	8	4	13,6	9	59,4	3,2	31,6	5
301.12.08.06	8	6	13,6	11,2	66	3,2	38,8	5
301.12.10.06	10	6	16,3	11,2	68,8	4,2	38,8	5
301.12.10.08	10	8	16,3	13,6	76,4	4,2	47,4	5

301.39

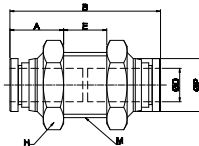
Doppio y intermedio ridotto
"Y" reducer double union



CODICE-CODE	ØD1	ØD2	ØP1	ØP2	B	F	Ød	Bag Qty
301.39.06.04	6	4	11,2	9	32,5	19,8	3,2	5
301.39.08.06	8	6	13,6	11,2	36,6	22	3,2	5

301.19

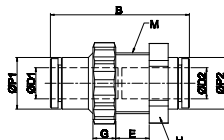
Passaparete intermedio automatico metallo
Bulkhead union



CODICE-CODE	ØD	ØP	M	A	H	B	E	Bag Qty
301.19.04	4	8,8	M12X1.0	10,7	14	30	8,6	10
301.19.06	6	11	M14X1.0	11,3	17	31,9	9,4	10
301.19.08	8	13	M16X1.0	13,2	19	37	10,6	10
301.19.10	10	15,5	M20X1.0	13,6	24	40,1	12,9	5
301.19.12	12	18,8	M22X1.0	15,3	26	45,8	15,4	5

301.48

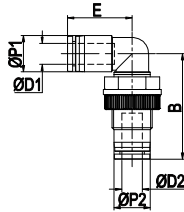
Passaparete intermedio automatico polimero
"P" bulkhead union



CODICE-CODE	ØD1	ØD2	ØP1	ØP2	M	G	H	B	E	Bag Qty
301.48.04	4	4	9	9	M12X1.5	5	14	30	7,1	10
301.48.06	6	6	11,2	11,2	M14X1.5	5	17	31,9	8,6	10
301.48.08	8	8	13,6	13,6	M16X1.5	6	19	36,6	8,8	10
301.48.10	10	10	16,3	16,3	M20X2.0	6	24	40	10,2	5
301.48.12	12	12	19,7	19,7	M24X2.0	6	27	46	11,9	5

301.60

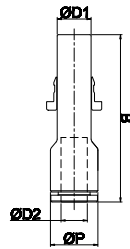
Curva 90° passaparete automatica
"P" elbow bulkhead union



CODICE-CODE	ØD1	ØD2	ØP1	ØP2	M	E	B	H	Bag Qty
301.60.04	4	4	10,4	10,4	M12X1.5	19,8	33,6	14	10
301.60.06	6	6	12,4	12,4	M14X1.5	17,2	37,9	17	10
301.60.08	8	8	17,4	17,4	M16X1.5	25,7	41,9	19	5
301.60.10	10	10	17,6	17,6	M20X2.0	30,3	47,6	24	5
301.60.12	12	12	21,2	21,2	M24X2.0	32,7	53,8	27	5

301.18

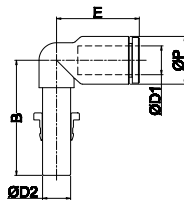
Codolo diritto automatico
Plug-in straight reducer



CODICE-CODE	ØD1	ØD2	ØP	B	Bag Qty
301.18.06.04	6	4	9	36,1	10
301.18.08.04	8	4	9	36,9	10
301.18.08.06		6	11,2	39,5	10
301.18.10.06	10	6	11,2	40,3	10
301.18.10.08		8	13,6	45,6	10
301.18.12.06	12	6	11,2	45	5
301.18.12.08		8	13,6	46,6	5
301.18.12.10		10	16,3	46,6	5

301.14

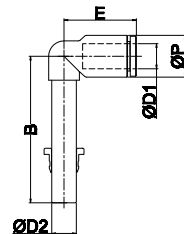
Codolo a 90° automatico
Plug-in elbow



CODICE-CODE	ØD1	ØD2	ØP	B	E	Bag Qty
301.14.04	4	4	9	23,5	17,1	10
301.14.06	6	6	11,2	29,6	18	10
301.14.08	8	8	13,6	32,8	23,6	10
301.14.10	10	10	16,3	36,2	25	5
301.14.12	12	12	19,7	39,9	32,2	5

301.41

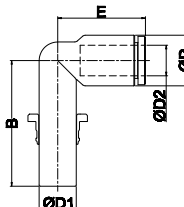
Codolo a 90° lungo automatico
Plug-in extended elbow



CODICE-CODE	ØD1	ØD2	ØP	B	E	Bag Qty
301.41.04	4	4	9	33,5	17,1	10
301.41.06	6	6	11,2	42,1	18	10
301.41.08	8	8	13,6	47,8	23,6	10
301.41.10	10	10	16,3	53,7	25	5
301.41.12	12	12	19,7	60,9	32,2	5

301.40

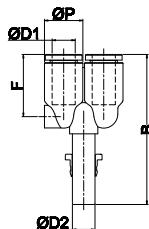
Codolo a 90° ridotto automatico
Plug-in reduction elbow



CODICE-CODE	ØD1	ØD2	ØP	B	E	Bag Qty
301.40.06.04	6	4	9	28,5	17,1	10
301.40.08.06	8	6	11,2	30,6	18	10
301.40.10.08	10	8	13,6	33,8	23,6	10
301.40.12.10	12	10	16,3	38,2	25	5

301.15

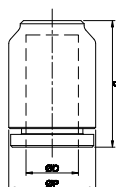
Codolo a Y automatico
"Y" plug-in



CODICE-CODE	ØD1	ØD2	ØP	B	F	Bag Qty
301.15.04	4	4	9	37,8	16	10
301.15.06	6	6	11.2	45	17,2	10
301.15.08	8	8	13.6	53,1	22	10
301.15.10	10	10	16.3	56	22,6	5
301.15.12	12	12	19.7	63,4	27,2	5

301.24

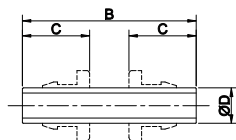
Tappo automatico
Cap



CODICE-CODE	ØD	ØP	B	Bag Qty
301.24.04	4	9	15,6	10
301.24.06	6	11.2	17	10
301.24.08	8	13.6	19,8	10
301.24.10	10	16.3	21	10
301.24.12	12	19.7	25,4	10

301.32

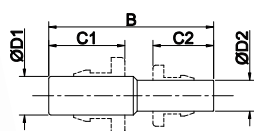
Giunzione tubo-tubo
Splicer tube



CODICE-CODE	ØD	B	C	Bag Qty
301.32.04	4	35	16	10
301.32.06	6	37	17	10
301.32.08	8	39,5	18,5	10
301.32.10	10	46	21	10
301.32.12	12	50	22,5	5

301.31

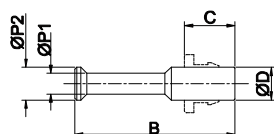
Giunzione ridotta tubo-tubo
Splicer tube reducer



CODICE-CODE	ØD1	ØD2	B	C1	C2	Bag Qty
301.31.06.04	6	4	36	17	16	10
301.31.08.04	8	4	38	18,9	18	10
301.31.08.06	8	6	39	18,5	17	10
301.31.10.06	10	6	42	21,9	19	10
301.31.10.08	10	8	43	21	18,5	10
301.31.12.08	12	8	45	23,9	20	10
301.31.12.10	12	10	48	22,5	21	10

301.33

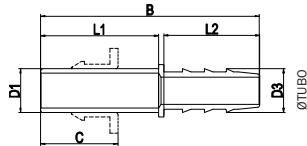
Tappo per raccordo automatico
Plug



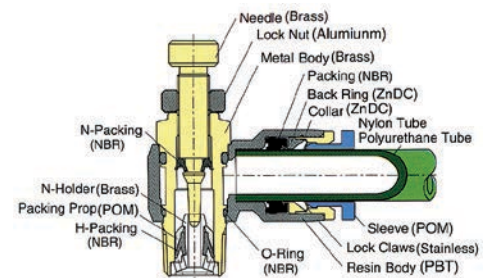
CODICE-CODE	ØD	B	ØP1	ØP2	C	Bag Qty
301.33.04	4	28	3	4	16	10
301.33.06	6	32	4	6	17	10
301.33.08	8	39	5	8	18,5	10
301.33.10	10	42	8	10	21	10
301.33.12	12	44	8	12	22,5	10

301.63

Codolo portagomma
Extended plug-in



CODICE-CODE	ØD1	Øtubo	ØD3	B	C	L1	L2	Bag Qty
301.63.04.04	4	4	5,9	36	16	18	17	10
301.63.06.06	6	6	7,9	41	17	23	17	10
301.63.08.06	8	6	7,9	43	18,5	25	17	10
301.63.08.08	8	8	10	48,2	18,5	25	22	10
301.63.10.08	10	8	10	50,2	21	27	22	10
301.63.12.08	12	8	10	54,2	22,5	31	22	10
301.63.12.10	12	10	12	54,7	22,5	31	22,5	10



Dati tecnici - Technical data

Applicazioni - Applications	aria compressa/vuoto - compressed air/vacuum
Fluido - Fluid	aria (no altri fluidi) - air (no other gases or liquids)
Pressione di lavoro - Working pressure	0 - 10 bar
Depressione - Vacuum	0,5 kgf /cm ²
Range di temperatura - Temperature range	-10 ÷ 60°C
Tubi consigliati - Recommended hoses	Nylon, Poliuretano - Nylon, Polyurethane

Guida alle referenze Guide to references

321 . 01 . 06 . 18

Serie Line

321 = Regolatore di flusso conico - in linea
Conical - In line speed controller
322 = Regolatore di flusso cilindrico
Cylindrical speed controller

Modello Type

Consultare le tabelle alle pagine che seguono
Please check it in following pages

Filetto Thread Size

18 = 1/8
14 = 1/4
38 = 3/8
12 = 1/2
M5 = M5

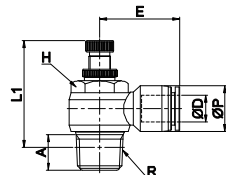
∅ Tubo Tube diameter

04 = tubo 4 mm
4mm tube
06 = tubo 6 mm
6mm tube
08 = tubo 8 mm
8mm tube
10 = tubo 10 mm
10mm tube
12 = tubo 12 mm
12mm tube

Modello/Model	Speed con.	
Per cilindro (out) For cylinder (out)		
Per valvola (in) For Valve (in)		
Unidirezionale in linea U/directional in line		
Bidirezionale in linea Bidirectional in line		

321.01

Regolatore di flusso 90° conico (con anello rosso)
versione per cilindro
Conical elbow speed controller (with red sleeve)
for cylinder



CODICE-CODE	ØD	R	ØP	A	L1 (max)	E	H	Bag Qty
321.01.04.18	4	G1/8	10	7	36,3	20,2	10	10
321.01.04.14		G1/4	10	10	43,7	23,2	14	10
321.01.06.18	6	G1/8	12,4	7	36,6	22,1	14	10
321.01.06.14		G1/4	12,4	10	43,7	24,2	14	10
321.01.08.18	8	G1/8	14,4	7	36,6	23,7	14	10
321.01.08.14		G1/4	14,4	10	43,7	26,9	14	10
321.01.08.38		G3/8	14,4	12,5	48,3	27,3	19	5
321.01.10.14	10	G1/4	17,6	10	43,7	29,1	14	5
321.01.10.38		G3/8	17,6	12,5	48,3	29,5	19	5
321.01.10.12		G1/2	17,6	15,5	47,8	32,4	24	5
321.01.12.38	12	G3/8	21	12,5	48,3	34,7	19	5
321.01.12.12		G1/2	21	15,5	47,8	34,7	24	5

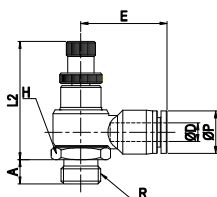
321.02

Regolatore di flusso 90° conico (con anello nero)
versione per valvola
Conical elbow speed controller (with black sleeve)
for valve

CODICE-CODE	ØD	R	ØP	A	L1 (max)	E	H	Bag Qty
321.02.04.18	4	G1/8	10	7	36,3	20,2	10	10
321.02.06.18	6	G1/8	12,4	7	36,6	22,1	10	10
321.02.08.18	8	G1/8	14,4	7	36,6	23,7	14	10
321.02.08.14		G1/4	14,4	10	43,7	26,9	14	10
321.02.10.38	10	G3/8	17,6	12,5	48,3	29,5	19	5
321.02.12.12	12	G1/2	21	15,5	47,8	34,7	24	5

322.01

Regolatore di flusso 90° cilindrico (con anello rosso)
versione per cilindro
Cylindrical elbow speed controller (with red sleeve)
for cylinder



CODICE-CODE	ØD	R	ØP	A	L2	E	H	Bag Qty
322.01.04.M5	4	M5	10	3,5	26,5	18,5	8	10
322.01.04.18		G1/8	10	6	36,3	20,2	14	10
322.01.04.14		G1/4	10	8	43,7	23,2	17	10
322.01.06.M5	6	M5	12,4	3,5	26,5	18,5	8	10
322.01.06.18		G1/8	12,4	6	36,6	22,1	14	10
322.01.06.14		G1/4	12,4	8	43,7	24,2	17	10
322.01.08.18	8	G1/8	14,4	6	36,6	23,7	14	10
322.01.08.14		G1/4	14,4	8	43,7	26,9	17	10
322.01.08.38		G3/8	14,4	10	48,3	27,3	20	5
322.01.10.14	10	G1/4	17,6	8	43,7	29,1	17	5
322.01.10.38		G3/8	17,6	10	48,3	29,5	20	5
322.01.10.12		G1/2	17,6	12	47,8	32,4	24	5
322.01.12.38	12	G3/8	21	10	48,3	34,7	20	5
322.01.12.12		G1/2	21	12	47,8	34,7	24	5

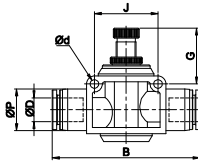
322.02

Regolatore di flusso 90° cilindrico (con anello nero)
versione per valvola
Cylindrical elbow speed controller (with black sleeve)
for valve

CODICE-CODE	ØD	R	ØP	A	L2	E	H	Bag Qty
322.02.04.M5	4	M5	10	3,5	26,5	18,5	8	10
322.02.04.18		G1/8	10	6	36,3	20,2	14	10
322.02.06.M5	6	M5	12,4	3,5	26,5	18,5	8	10
322.02.06.18		G1/8	12,4	6	36,6	22,1	14	10
322.02.08.18	8	G1/8	14,4	6	36,6	23,7	14	10
322.02.08.14	8	G1/4	14,4	8	43,7	26,9	17	10
322.02.10.38	10	G3/8	17,6	10	48,3	29,5	20	10
322.02.12.12	12	G1/2	21	12	47,8	34,7	24	5

321.05 - 321.06

Regolatore di flusso in linea
In line speed controller



321.05 versione unidirezionale - in line unidirectional version

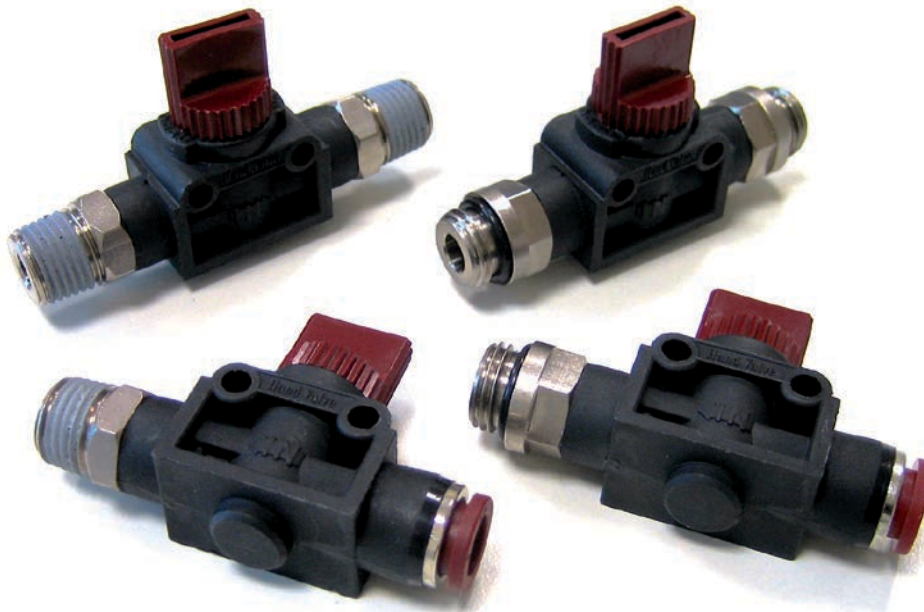
CODICE-CODE	ØD	ØP	B	Ød	G	J	Bag Qty
321.05.04	4	10	38,4	3,2	13,5	14	10
321.05.06	6	12,4	47,2	4,3	18,5	20	5
321.05.08	8	14,4	51,8	4,3	19	22	5
321.05.10	10	17,6	59,6	4,3	23	26	5
321.05.12	12	21	71,4	4,3	20,5	32	4

321.06 versione bidirezionale - in line bidirectional version

CODICE-CODE	ØD	ØP	B	Ød	G	J	Bag Qty
321.06.04	4	10	38,4	3,2	13,5	14	10
321.06.06	6	12,4	47,2	4,3	18,5	20	5
321.06.08	8	14,4	51,8	4,3	19	22	5
321.06.10	10	17,6	59,6	4,3	23	26	5
321.06.12	12	21	71,4	4,3	20,5	32	4

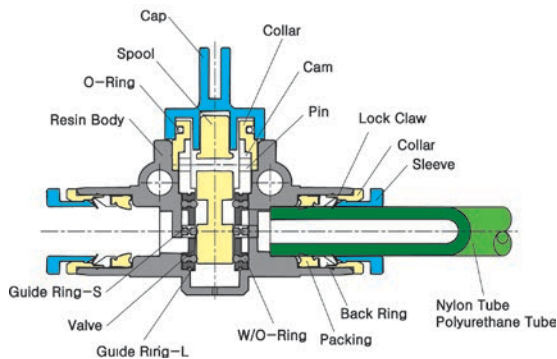
Line 341

Valvole manuali a 3 vie 3 ways Hand valves



Dati tecnici - Technical data

Applicazioni - Applications	aria compressa/vuoto - compressed air/vacuum
Fluido - Fluid	aria (no altri fluidi) - air (no other gases or liquids)
Pressione di lavoro - Working pressure	0 - 10 bar
Depressione - Vacuum	-750 mmHg (10 Torr)
Range di temperatura - Temperature range	-10 ÷ 60°C
Tubi consigliati - Recommended hoses	Nylon, Poliuretano - Nylon, Polyurethane



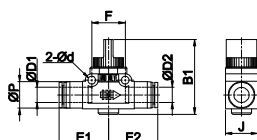
Le valvole 3/2 serie 341 hanno la funzione di chiudere l'alimentazione e contemporaneamente scaricare il circuito di valle. Sono disponibili nella versione tubo/tubo e con connessione filettata.

The 3 ways hand valves of the 341 line have the function to close the air flow input and to release the downstream circuit. There are available with intermediate version (hose/hose) and with thread connections.

341.04

Valvola manuale automatico/automatico
Straight union hand valve

CODICE-CODE	ØD1	ØD2	ØP	E1	E2	Ød	B1	F	Bag Qty
341.04.06.06	6	6	12,4	25,2	25,2	4,2	40,5	18,1	50
341.04.08.08	8	8	14,4	27,7	27,7	4,2	40,5	20	50
341.04.10.10	10	10	17,6	31,4	31,4	4,2	40,4	24,4	25
341.04.12.12	12	12	21	34,3	34,3	4,2	40,4	24,4	20





Dati tecnici - Technical data

Fluido - Fluid	acqua e aria - water and air
Pressione di lavoro - Working pressure	0- 10 bar
Depressione - Vacuum	-750 mmHg (10 Torr)
Range di temperatura - Temperature range	-10 ÷ 60°C
Tubi consigliati - Recommended hoses	Nylon, Poliuretano - Nylon, Polyurethane

I rubinetti delle linee 351 e 352 sono stati studiati per rendere elegante, ergonomico e particolarmente versatile questo comune accessorio di interruzione del circuito.

The ball valves of the 351/352 lines have been studied in order to render elegant, ergonomic and particularly versatile this common cutoff circuit accessory.

Guida alle referenze Guide to references

351 . 01 . 06 . 06

Serie Line

351 = Rubinetto in polimero
Ball valve
352 = Rubinetto in metallo
Metal ball valve

Filetto Thread Size

18 = 1/8
14 = 1/4
38 = 3/8
12 = 1/2
M5 = M5

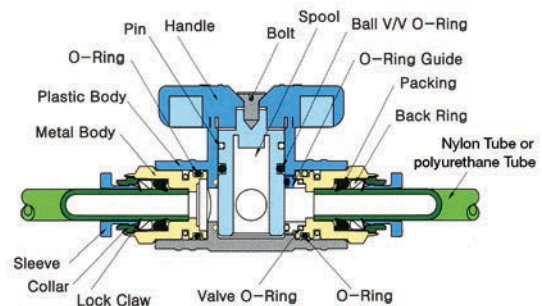
∅ Tubo Tube diameter

06 = tubo 6 mm
6mm tube
08 = tubo 8 mm
8mm tube
10 = tubo 10 mm
10mm tube
12 = tubo 12 mm
12mm tube

Tipo di raccordo Fitting type

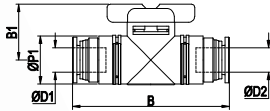
Consultare le tabelle alle
pagine che seguono

Please check it in following
pages



351.01

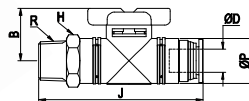
Rubinetto diritto aut/aut
Union ball valve



CODICE-CODE	ØD1	ØD2	ØP	B	B1	Bag Qty
351.01.06.06	6	6	17	59,4	23	5
351.01.08.08	8	8	17	59,2	23	5
351.01.10.10	10	10	24	78,4	28	4
351.01.12.12	12	12	24	79,3	28	4

351.03

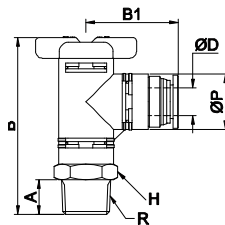
Rubinetto diritto aut/fil
Straight ball valve



CODICE-CODE	ØD	R	ØP	H	J	B	Bag Qty
351.03.06.18	6	G1/8	17	17	60,4	23	5
351.03.06.14		G1/4	17	17	63,4	23	5
351.03.08.18	8	G1/8	17	17	60,3	23	5
351.03.08.14		G1/4	17	17	63,3	23	5
351.03.08.38	8	G3/8	17	17	64,3	23	5
351.03.10.14		G1/4	24	24	82,4	28	4
351.03.10.38	10	G3/8	24	24	83,4	28	4
351.03.10.12		G1/2	24	24	87,4	28	4
351.03.12.38	12	G3/8	24	24	83,85	28	4
351.03.12.12		G1/2	24	24	87,85	28	4

351.06

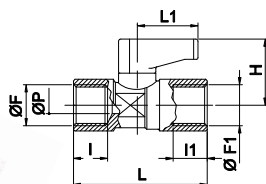
Rubinetto 90° aut/fil
Elbow ball valve



CODICE-CODE	ØD	R	ØP	A	H	B	B1	Bag Qty
351.06.06.18	6	G1/8	17	8	17	53,75	29,75	5
351.06.06.14		G1/4	17	11	17	56,75	29,75	5
351.06.08.18	8	G1/8	17	8	17	53,75	30,25	5
351.06.08.14		G1/4	17	11	17	56,75	30,25	5
351.06.08.38	8	G3/8	17	12	17	57,75	30,25	5
351.06.10.14		G1/4	24	11	24	72,1	40,1	4
351.06.10.38	10	G3/8	24	12	24	73,1	40,1	4
351.06.10.12		G1/2	24	15	24	77,1	40,1	4
351.06.12.38	12	G3/8	24	12	24	73,1	40	4
351.06.12.12		G1/2	24	15	24	77,1	40	4

352.07

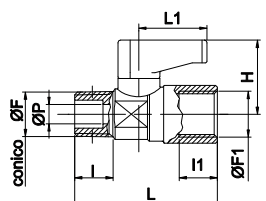
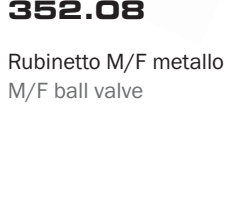
Rubinetto F/F metallo
Female ball valve



CODICE-CODE	F	F1	P	I	I1	L	L1	H	CH	Bag Qty
352.07.18.18	1/8	1/8	5,5	8	8	36,5	19	21,5	14	5
352.07.14.14	1/4	1/4	5,5	11	11	43	19	21,5	14	5
352.07.38.38	3/8	3/8	7	11,5	16	48	19	22,5	18	2
352.07.12.12	1/2	1/2	10	16	23	59	25	32	22	2

352.08

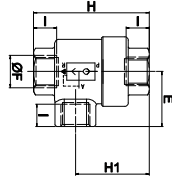
Rubinetto M/F metallo
M/F ball valve



CODICE-CODE	F	F1	P	I	I1	L	L1	H	CH	Bag Qty
352.08.18.18	1/8	1/8	5,5	8	8	35,5	19	21,5	14	5
352.08.14.14	1/4	1/4	5,5	11	11	40,5	19	21,5	14	5
352.08.38.38	3/8	3/8	7	13	16	48	19	22,5	18	2
352.08.12.12	1/2	1/2	10	17	23	58	25	32	22	2

351.01

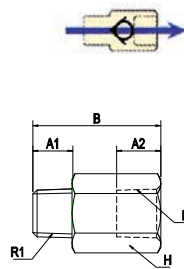
Valvola di scarico rapido
Quick exhaust valve



CODICE-CODE	F	I	H	H 1	CH	CH 1	E	Bag Qty
361.01.18	1/8	8	42	28	14	14	19,5	5
361.01.14	1/4	11	53	34,5	19	19	25	5
361.01.38	3/8	12	58	36	21	21	26	2
361.01.12	1/2	14	71	44	26	26	35	2
361.01.34	3/4	18	86	52	32	32	38,5	2

331.03

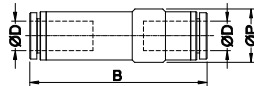
Valvola unidirezionale M/F
M/F check valve



CODICE-CODE	R1	R2	H	A1	A2	B	Bag Qty
331.03.18.18	1/8	1/8	14	6	9	22,8	10
331.03.14.14	1/4	1/4	17	8	11	28,5	10
331.03.38.38	3/8	3/8	24	10	13	54,3	5
331.03.12.12	1/2	1/2	27	12	16	63,1	5

331.05

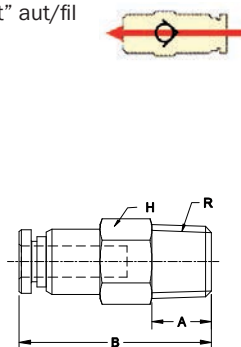
Valvola unidirezionale aut/aut
Straight union check valve



CODICE-CODE	ØD	ØP	B	Bag Qty
331.05.04.04	4	10	41,1	10
331.05.06.06	6	12,4	47,2	10
331.05.08.08	8	14,4	51,6	10
331.05.10.10	10	25	77,3	5
331.05.12.12	12	25	80	5

331.01

Valvola unidirezionale "out" aut/fil
Conical check "out" valve



CODICE-CODE	ØD	R	H	ØP	B	A	Bag Qty
331.01.04.18	4	1/8"	10	9,6	24,7	8	10
331.01.06.18	6	1/8	12	11,6	28,6	8	10
331.01.06.14		1/4	14	11,6	28,6	11	10
331.01.08.18	8	1/8	14	13,6	30,5	8	10
331.01.08.14		1/4	14	13,6	35,1	11	10
331.01.10.38	10	3/8	24	25	62,2	12	5
331.01.12.38	12	3/8	24	25	64,4	12	5
331.01.12.12		1/2	27	28	70,5	15	5

331.02

Valvola unidirezionale "in" aut/fil
Conical check "in" valve



CODICE-CODE	ØD	R	H	ØP	B	A	Bag Qty
331.02.04.18	4	1/8"	10	9,6	24,7	8	10
331.02.06.18	6	1/8	12	11,6	28,6	8	10
331.02.06.14		1/4	14	11,6	28,6	11	10
331.02.08.18	8	1/8	14	13,6	30,5	8	10
331.02.08.14		1/4	14	13,6	35,1	11	10
331.02.10.38	10	3/8	24	25	62,2	12	10
331.02.12.38	12	3/8	24	25	64,4	12	5
331.02.12.12		1/2	27	28	70,5	15	5

Line 311

Raccordi tradizionali Standard Fittings



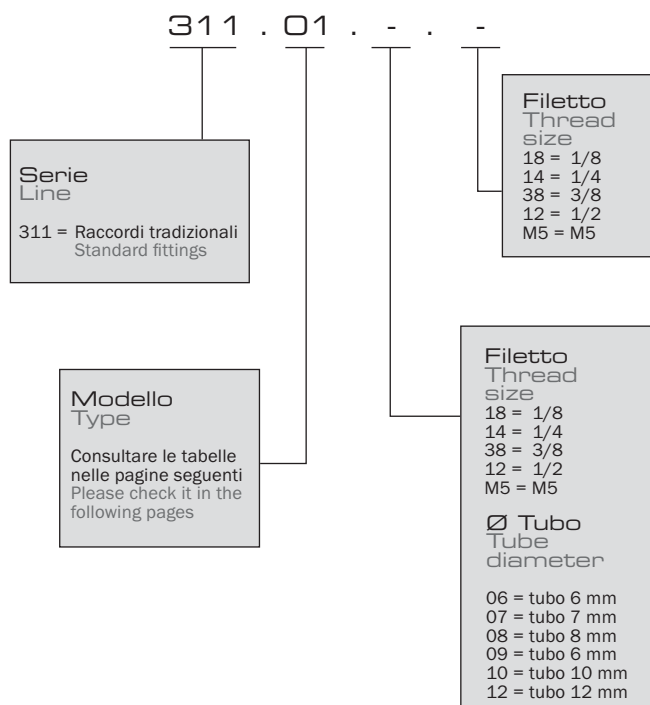
Dati tecnici - Technical data

Applicazioni - Applications	Circuiti pneumatici, oleodinamici e idraulici Pneumatic and hydraulic systems
Pressione di lavoro - Working pressure	60 bar
Depressione - Vacuum	-
Range di temperatura - Temperature range	-10 ÷ 70°C

Guida alle referenze Guide to references

La linea dei raccordi tradizionali comprende una vasta gamma di prodotti per rispondere alle più svariate esigenze applicative.

The traditional fittings line have a large products range in order to meet the most varied application needs.

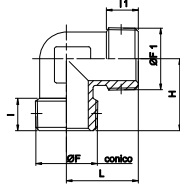


Line 311

Raccordi tradizionali Standard Fittings

311.01

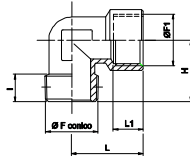
Curva M/M conica
Conical elbow male



CODICE-CODE	F	F1	I	I1	H	L	CH	Bag Qty
311.01.18	1/8	1/8	8	8	18,5	18,5	10	20
311.01.14	1/4	1/4	11	11	23,5	23,5	13	10
311.01.14.18	1/4	1/8	11	8	21,5	19	10	20
311.01.38	3/8	3/8	11,5	11,5	26	26	17	10
311.01.12	1/2	1/2	14	14	31	31	21	5

311.02

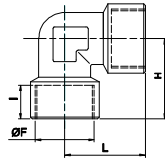
Curva M/F conica
M/F conical elbow



CODICE-CODE	F	F1	I	I1	H	L	CH	Bag Qty
311.02.18	1/8	1/8	8	8	18,5	21	10	20
311.02.14	1/4	1/4	11	11	23,5	25,5	13	10
311.02.14.18	1/4	1/8	11	8	21,5	21	10	20
311.02.38	3/8	3/8	11,5	11,5	26	28	17	5
312.01.12	1/2	1/2	14	14	31	33,5	21	5

311.03

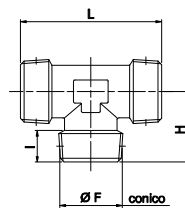
Curva F/F conica
F/F conical elbow



CODICE-CODE	F	I	H	L	CH	Bag Qty
311.03.18	1/8	8	21	21	10	20
311.03.14	1/4	11	25,5	25,5	13	10
311.03.38	3/8	11,5	28	28	17	5
311.03.12	1/2	14	33,5	33,5	21	5

311.04

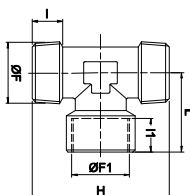
T M/M/M conico
"T" conical male



CODICE-CODE	F	I	H	L	CH	Bag Qty
311.04.18	1/8	8	18,5	37	10	10
311.04.14	1/4	11	23,5	47	13	5
311.04.38	3/8	11,5	26	52	17	5
311.04.12	1/2	14	31	62	21	5

311.05

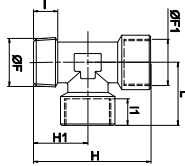
T M/F/M conico
"T" conical M/F/M



CODICE-CODE	F	F1	I	I1	H	L	CH	Bag Qty
311.05.18	1/8	1/8	8	8	37	21	10	10
311.05.14	1/4	1/4	11	11	47	25,5	13	5
311.05.38	3/8	3/8	11,5	11,5	52	28	17	5
311.05.12	1/2	1/2	14	14	62	33,5	21	5

311.06

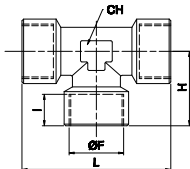
T M/F/F conico
"T" conical M/F/F



CODICE-CODE	F	F1	I	I1	H	H1	L	CH	Bag Qty
311.06.18	1/8	1/8	8	8	39,5	18,5	21	10	10
311.06.14	1/4	1/4	11	11	49	23,5	25,5	13	5
311.06.38	3/8	3/8	11,5	11,5	54	26	28	17	5
311.06.12	1/2	1/2	14	14	64,5	31	33,5	21	5

311.07

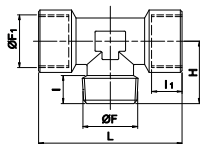
T F/F/F conico
"T" conical female



CODICE-CODE	F	I	H	L	CH	Bag Qty
311.07.18	1/8	8	21	42	10	10
311.07.14	1/4	11	25,5	51	13	5
311.07.38	3/8	11,5	28	56	17	5
311.07.12	1/2	14	33,5	67	21	5

311.08

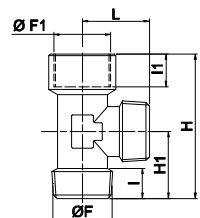
T f/m/f conico
"T" conical F/M/F



CODICE-CODE	F	F1	I	I1	H	L	CH	Bag Qty
311.08.18	1/8	1/8	8	8	18,5	42	10	10
311.08.14	1/4	1/4	11	11	23,5	51	13	5
311.08.38	3/8	3/8	11,5	11,5	26	56	17	5
311.08.12	1/2	1/2	14	14	31	67	21	5

311.09

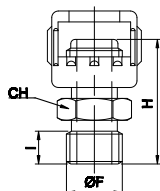
T f/m/m conico
"T" conical F/M/M



CODICE-CODE	F	F1	I	I1	H	H1	L	CH	Bag Qty
311.09.18	1/8	1/8	8	8	39,5	18,5	18,5	10	10
311.09.14	1/4	1/4	11	11	49	23,5	23,5	13	5
311.09.38	3/8	3/8	11,5	11,5	54	26	26	17	5
311.09.12	1/2	1/2	14	14	64,5	31	31	21	5

311.36

Raccordo dado fresato
Milled fitting nut



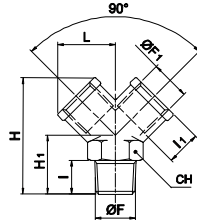
CODICE-CODE	F	I	H	CH	Bag Qty
311.36.14	1/4	10	28,5	15	2

Line 311

Raccordi tradizionali Standard Fittings

311.10

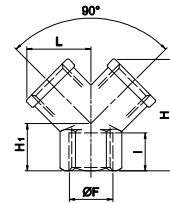
Y F/M/F
"Y" conical F/M/F



CODICE-CODE	F	F 1	I	I 1	H 1	L	H	CH	Bag Qty
311.10.18	1/8	1/8	8	8	16	14,5	32	13	10
311.10.14	1/4	1/4	11	11	20	18	38	17	10
311.10.38	3/8	3/8	11,5	11,5	22	20,5	42,5	20	5
311.10.12	1/2	1/2	14	14	27	26,5	53	25	5

311.11

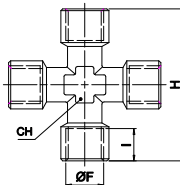
Y F/F/F
"Y" female



CODICE-CODE	F	I	H 1	L	H 1	CH	Bag Qty
311.11.18	1/8	8	12	14,5	26,5	13	10
311.11.14	1/4	11	14	18	32	17	10
311.11.38	3/8	11,5	16	20,5	37	20	5
311.11.12	1/2	14	19	26,5	45	25	5

311.13

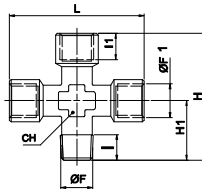
Croce femmina
Female cross



CODICE-CODE	F	I	H	CH	Bag Qty
311.13.18	1/8	8	42	10	10
311.13.14	1/4	11	51	13	5
311.13.38	3/8	11,5	56	17	5
311.13.12	1/2	14	67	21	2

311.12

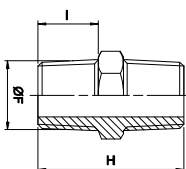
Croce M/F/F/F
M/F/F/F conical cross



CODICE-CODE	F	F 1	I	I 1	H	H 1	L	CH	Bag Qty
311.12.18	1/8	1/8	8	8	39,5	18,5	42	10	10
311.12.14	1/4	1/4	11	11	49	23,5	51	13	5
311.12.38	3/8	3/8	11,5	11,5	54	26	56	17	5
311.12.12	1/2	1/2	14	14	64,5	31	67	21	2

311.14

Nipplo M/M conico
Conical male nipple



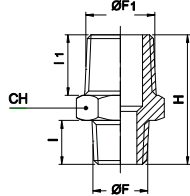
CODICE-CODE	F	I	H	CH	Bag Qty
311.14.18	1/8	8	20,5	12	20
311.14.14	1/4	11	27	14	20
311.14.38	3/8	11,5	28	17	10
311.14.12	1/2	14	33,5	22	5
311.14.34	3/4	16,5	39,5	27	5
311.14.01	1"	19	45,5	34	5

Line 311

Raccordi tradizionali Standard Fittings

311.16

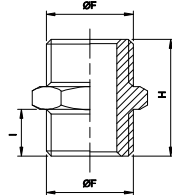
Nipolo M/M conico ridotto
Conical reduction male nipple



CODICE-CODE	F	F 1	I	I 1	H	CH	Bag Qty
311.16.18.14	1/8	1/4	8	11	24	14	20
311.16.14.38	1/4	3/8	11	11,5	27,5	17	10
311.16.14.12	1/4	1/2	11	14	30,5	22	10
311.16.38.12	3/8	1/2	11,5	14	31	22	10
311.16.12.34	1/2	3/4	14	16,5	37	27	5
311.16.34.01	3/4	1"	16,5	19	42,5	34	5

311.15

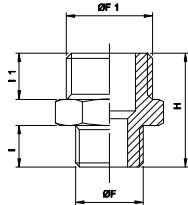
Nipolo M/M cilindrico
Cylindrical male nipple



CODICE-CODE	F	I	H	CH	Bag Qty
311.15.M5	M5	4	11,5	8	20
311.15.18	1/8	6	16,5	14	20
311.15.14	1/4	8	21	17	20
311.15.38	3/8	9	23	19	10
311.15.12	1/2	10	25,5	24	10

311.17

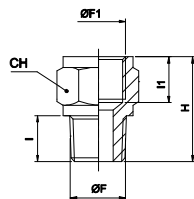
Nipolo M/M cilindrico ridotto
Cylindrical male nipple



CODICE-CODE	F	F 1	I	I 1	H	CH	Bag Qty
311.17.M5.18	M5	1/8	4	6	14,5	14	20
311.17.18.14	1/8	1/4	6	8	19	17	20
311.17.18.38	1/8	3/8	6	9	20	19	20
311.17.14.38	1/4	3/8	8	9	22	19	10
311.17.14.12	1/4	1/2	8	10	23,5	24	10
311.17.38.12	3/8	1/2	9	10	24,5	24	10
311.17.12.34	1/2	3/4	10	11	27,5	30	5
311.17.34.01	3/4	1"	12	11	32	36	5

311.18

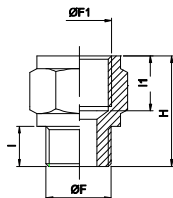
Nipolo M/F conico
M/F conical reducer



CODICE-CODE	F	F 1	I	I 1	H	CH	Bag Qty
311.18.18.18	1/8	1/8	8	8	18	14	20
311.18.18.14	1/8	1/4	8	11	21,5	17	20
311.18.14.14	1/4	1/4	11	11	24,5	17	10
311.18.14.38	1/4	3/8	11	11,5	25,5	22	10
311.18.14.12	1/4	1/2	11	14	29	24	5
311.18.38.38	3/8	3/8	11,5	11,5	26	22	10
311.18.38.12	3/8	1/2	11,5	14	29,5	24	5
311.18.12.12	1/2	1/2	14	14	32	26	5

311.19

Nipolo M/F cilindrico
M/F cylindrical reducer



CODICE-CODE	F	F 1	I	I 1	H	CH	Bag Qty
311.19.18.18	1/8	1/8	6	8	16	14	20
311.19.18.14	1/8	1/4	6	11	19,5	17	20
311.19.14.14	1/4	1/4	8	11	21,5	17	20
311.19.14.38	1/4	3/8	8	11,5	22,5	22	20
311.19.14.12	1/4	1/2	8	14	26	24	10
311.19.38.38	3/8	3/8	9	11,5	23,5	22	10
311.19.38.12	3/8	1/2	9	14	27	24	10
311.19.12.12	1/2	1/2	10	14	28	26	5

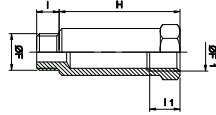
Line 311

Raccordi tradizionali

Standard Fittings

311.20

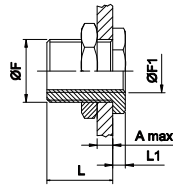
Colonneta M/F
M/F h22 cylindrical extension reducer



CODICE-CODE	F	F 1	I	I 1	H	L	CH	Bag Qty
311.20.18.18	1/8	1/8	6	8	16	22	14	20
311.20.18.18	1/8	1/8	6	8	45	51	14	10
311.20.14.14	1/4	1/4	8	11	27	35	17	10
311.20.14.141	1/4	1/4	8	11	43	51	17	5

311.21

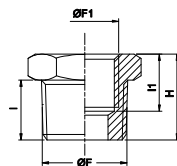
Passaparete M/F
F/F bulkhead



CODICE-CODE	F	F 1	Amax	L	L 1	CH	CH 1	Bag Qty
311.21.M5	M10X1	M5	7	10,5	3,5	14	14	10
311.21.18	M16X1,5	1/8	10	14	4	19	22	10
311.21.14	M20X1,5	1/4	16	21	4	24	27	5
311.21.38	M26X1,5	3/8	15	21	5	30	32	5
311.21.12	M28X1,5	1/2	21	27	6	32	36	5

311.22

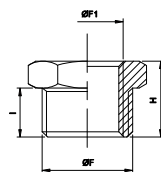
Riduzione M/F conica
M/F conical reducer



CODICE-CODE	F	F 1	I	I 1	H	CH	Bag Qty
311.22.14.18	1/4	1/8	11	8	16	14	20
311.22.38.18	3/8	1/8	11,5	8	16,5	17	20
311.22.38.14	3/8	1/4	11,5	11	16,5	17	20
311.22.12.18	1/2	1/8	14	8	19,5	22	10
311.22.12.14	1/2	1/4	14	11	19,5	22	10
311.22.12.38	1/2	3/8	14	11,5	19,5	22	10
311.22.34.12	3/4	1/2	16,5	14	23	27	5

311.23

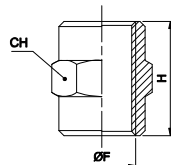
Riduzione M/F cilindrica
M/F cylindrical reducer



CODICE-CODE	F	F 1	I	H	CH	Bag Qty
311.23.18.M5	1/8	M5	6	10,5	14	20
311.23.14.18	1/4	1/8	8	13	17	20
311.23.38.18	3/8	1/8	9	14	19	20
311.23.38.14	3/8	1/4	9	14	19	20
311.23.12.18	1/2	1/8	10	15,5	24	10
311.23.12.14	1/2	1/4	10	15,5	24	10
311.23.12.38	1/2	3/8	10	15,5	24	10
311.23.34.12	3/4	1/2	11	17,5	30	5

311.24

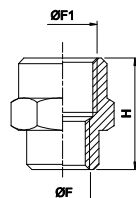
Manicotto F/F
F/F sleeve



CODICE-CODE	F	H	CH	Bag Qty
311.24.M5	M5	11	8	20
311.24.18	1/8	15	14	20
311.24.14	1/4	22	17	20
311.24.38	3/8	23	22	10
311.24.12	1/2	28	26	10
311.24.34	3/4	32	32	5

311.25

Manicotto F/F ridotto
F/F sleeve reducer



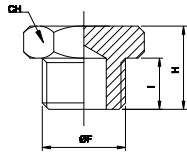
CODICE-CODE	F	F 1	H	CH	Bag Qty
311.25.M5.18	M5	1/8	13,5	14	10
311.25.18.14	1/8	1/4	19	17	10
311.25.18.38	1/8	3/8	20	22	10
311.25.14.38	1/4	3/8	22,5	22	10
311.25.14.12	1/4	1/2	26	24	10
311.25.38.12	3/8	1/2	26	24	10

Line 311

Raccordi tradizionali Standard Fittings

311.26

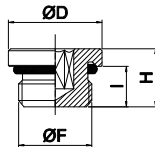
Tappo M esagonale
Male plug



CODICE-CODE	F	I	H	CH	Bag Qty
311.26.18	1/8	6	10	14	20
311.26.14	1/4	8	12,5	17	20
311.26.38	3/8	9	13,5	19	20
311.26.12	1/2	10	15,5	24	10

311.28

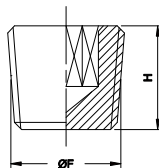
Tappo M cilindrico c/oring
Cylindrical male plug with o-ring



CODICE-CODE	F	I	H	D	CH	Bag Qty
311.28.18	1/8	6,5	9,5	14	5	20
311.28.14	1/4	8	11,5	17	6	20
311.28.38	3/8	9	12,5	20	8	20
311.28.12	1/2	10	14	26	10	10

311.29

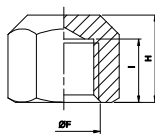
Grano conico in ottone
Conical brass male plug



CODICE-CODE	F	H	CH	Bag Qty
311.29.18	1/8	7,5	5	20
311.29.14	1/4	10	6	20
311.29.38	3/8	11	8	20
311.29.12	1/2	13	10	10

311.30

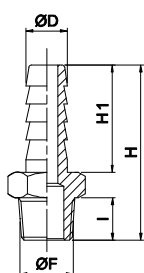
Tappo femmina
Plug female



CODICE-CODE	F	I	H	CH	Bag Qty
311.30.18	1/8	8	11,5	14	20
311.30.14	1/4	11	15	17	20
311.30.38	3/8	11,5	15,5	20	10
311.30.12	1/2	14	20	24	10

311.31

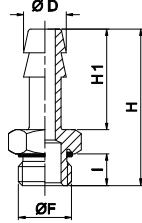
Portagomma maschio conico
Conical male hose



CODICE-CODE	D	F	I	H	H 1	CH	Bag Qty
311.31.06.18	6	1/8	8	31,5	19	12	20
311.31.06.14	6	1/4	11	35	19	14	20
311.31.07.18	7	1/8	8	31,5	19	12	20
311.31.07.14	7	1/4	11	35	19	14	20
311.31.08.18	8	1/8	8	31,5	19	12	20
311.31.08.14	8	1/4	11	35	19	14	20
311.31.09.18	9	1/8	8	31,5	19	12	20
311.31.09.14	9	1/4	11	35	19	14	20
311.31.09.38	9	3/8	11,5	35,5	19	17	20
311.31.09.12	9	1/2	14	38,5	19	22	10
311.31.10.14	10	1/4	11	36	20	14	20
311.31.10.38	10	3/8	11,5	36,5	20	17	20
311.31.10.12	10	1/2	14	39,5	20	22	20
311.31.12.38	12	3/8	11,5	36,5	20	17	10
311.31.12.12	12	1/2	14	39,5	20	22	10

311.32

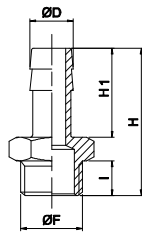
Portagomma maschio cilindrico c/oring
Cylindrical male hose with o-ring



CODICE-CODE	D	F	I	H	H 1	CH	Bag Qty
311.32.06.18	6	1/8	6,5	30	19	14	20
311.32.06.14	6	1/4	8	32	19	17	20
311.32.07.18	7	1/8	6,5	30	19	14	20
311.32.07.14	7	1/4	8	32	19	17	20
311.32.08.18	8	1/8	6,5	30	19	14	20
311.32.08.14	8	1/4	8	32	19	17	20
311.32.09.18	9	1/8	6,5	30	19	14	20
311.32.09.14	9	1/4	8	32	19	17	20
311.32.09.38	9	3/8	9	33	19	20	20
311.32.12.14	12	1/4	8	33	20	17	10
311.32.12.38	12	3/8	9	34	20	20	10
311.32.12.12	12	1/2	10	35,5	20	24	10

311.33

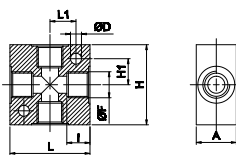
Portagomma cilindrico
Cylindrical male hose



CODICE-CODE	D	F	I	H	H 1	CH	Bag Qty
311.33.06.18	6	1/8	6	29,5	19	12	20
311.33.06.14	6	1/4	8	32	19	14	20
311.33.07.18	7	1/8	6	29,5	19	12	20
311.33.07.14	7	1/4	8	32	19	14	20
311.33.08.18	8	1/8	6	29,5	19	12	20
311.33.08.14	8	1/4	8	32	19	14	20
311.33.08.38	8	3/8	9	33	19	19	20
311.33.09.14	9	1/4	8	32	19	14	20
311.33.09.38	9	3/8	9	33	19	19	20
311.33.10.14	10	1/4	8	33	20	14	20
311.33.10.38	10	3/8	9	34	20	19	20
311.33.12.14	12	1/4	8	33	20	14	20
311.33.12.38	12	3/8	9	34	20	19	10
311.33.12.12	12	1/2	10	35,5	20	22	10

311.34

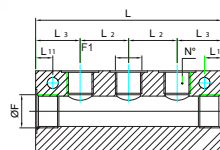
Partitore a 4 vie
Cross manifold



CODICE-CODE	F	I	H	H 1	L	L 1	D	A	Bag Qty
311.34.18	1/8	8	25	8,5	25	8,5	4,5	16	10
311.34.14	1/4	11	40	13	40	13	5,5	20	5
311.34.38	3/8	11,5	50	17	50	17	5,5	25	2
311.34.12	1/2	14	50	17	50	17	5,5	30	2

311.35

Partitore multiplo uscite 1 lato
Multiple out-put 1 side manifold



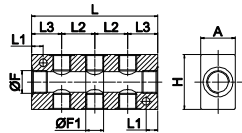
CODICE-CODE	F	F 1	A	H	L 1	L 2	L 3	L	N°	Bag Qty
311.35.14.02	1/4	1/8	20	30	4,5	18	18	54	2	2
311.35.14.03	1/4	1/8	20	30	4,5	18	18	72	3	2
311.35.14.04	1/4	1/8	20	30	4,5	18	18	90	4	2
311.35.14.05	1/4	1/8	20	30	4,5	18	18	108	5	2
311.35.38.02	3/8	1/4	25	40	8,5	24	22	68	2	2
311.35.38.03	3/8	1/4	25	40	8,5	24	22	92	3	2
311.35.38.04	3/8	1/4	25	40	8,5	24	22	116	4	2
311.35.38.05	3/8	1/4	25	40	8,5	24	22	140	5	2

Line 311

Raccordi tradizionali Standard Fittings

311.36

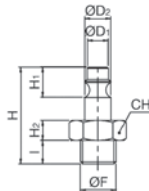
Partitore multiplo uscite 2 lati
Multiple out-put 2 side manifold



CODICE-CODE	F	F1	A	H	L1	L2	L3	L	N°	Bag Qty
311.36.14.02	1/4	1/8	20	30	4,5	18	18	54	2+2	2
311.36.14.03	1/4	1/8	20	30	4,5	18	18	72	3+3	2
311.36.14.04	1/4	1/8	20	30	4,5	18	18	90	4+4	2
311.36.14.05	1/4	1/8	20	30	4,5	18	18	108	5+5	2
311.36.38.02	3/8	1/4	25	40	8,5	24	22	68	2+2	2
311.36.38.03	3/8	1/4	25	40	8,5	24	22	92	3+3	2
311.36.38.04	3/8	1/4	25	40	8,5	24	22	116	4+4	2
311.36.38.05	3/8	1/4	25	40	8,5	24	22	140	5+5	2

311.38.01

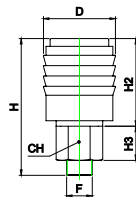
Innesto rapido maschio serie "Italia"
Male quick coupling "Italy" series



CODICE-CODE	F	I	H	H1	H2	D1	D2	CH
311.38.01.14	1/4	8	37	14	5	7,5	12	14
311.38.01.38	3/8	8	37	14	5	7,5	12	17

311.38.02

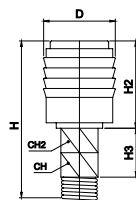
Rubinetto rapido a sfera serie "Italia"
Thread quick coupling "Italy" series



CODICE-CODE	F	H	H1	H2	D	CH
311.38.02.14	1/4	51	25	13	22,7	15
311.38.02.38	3/8	45	25	5	22,7	17
311.38.02.12	1/2	47	25	7	22,7	21

311.38.03

Rubinetto rapido a sfera spirale serie "Italia"
Spring quick coupling "Italy" series



CODICE-CODE	F	H	H1	H2	D	CH	CH1
311.38.03.08	8x6	138	25	23,5	22,7	15	13
311.38.03.10	10x8	138	25	23,5	22,7	15	15
311.38.03.12	12x10	140	25	23,5	22,7	15	17

Line 312

Raccorderia a calzamento Quick fittings



Dati tecnici - Technical data

Applicazioni - Applications	Circuiti pneumatici, oleodinamici e idraulici Pneumatic and hydraulic systems
Pressione di lavoro - Working pressure	vuoto ÷ 18 bar - vacuum ÷ 18 bar
Range di temperatura - Temperature range	Vedi caratteristiche dei tubi impiegati - See features hose used
Tubi consigliati - Recommended hoses	Nylon, Poliuretano o Rilsan - Nylon, Polyurethane or Rilsan

Il raccordo a calzamento rimane ancora una valida alternativa al raccordo automatico in presenza di applicazioni particolarmente gravose.

The quick fitting remains a valid alternative to the push-in fitting in the presence of severe demanding applications.

Guida alle referenze Guide to references

312 . 01 . 04 . 18

**Serie
Line**
312 = Raccordo
a calzamento
Quick fitting

**Filetto
Thread Size**
18 = 1/8
14 = 1/4
38 = 3/8
12 = 1/2
M5 = M5

**Tipo di raccordo
Fitting type**
Consultare le tabelle alle
pagine che seguono
Please check it in following
pages

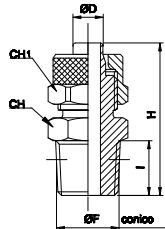
**Ø Tubo
Tube diameter**
04 = tubo 4/2,7 mm
06 = tubo 6/4 mm
08 = tubo 8/6 mm
10 = tubo 10/8 mm
12 = tubo 12/10 mm
15 = tubo 15/12,5 mm

Line 312

Raccorderia a calzamento Quick fittings

312.01

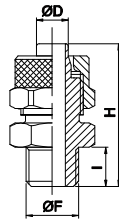
Maschio diritto conico
Conical straight male



CODICE-CODE	D	F	I	H	CH	CH 1	Bag Qty
312.01.04.18	4/2,7	1/8	8	23,8	12	8	10
312.01.05.18	5/3	1/8	8	25	12	8	20
312.01.06.18	6/4	1/8	8	27,5	12	12	20
312.01.06.14	6/4	1/4	11	31	14	12	10
312.01.06.38	6/4	3/8	11,5	31,5	17	12	10
312.01.08.18	8/6	1/8	8	27,5	12	14	10
312.01.08.14	8/6	1/4	11	31	14	14	10
312.01.08.38	8/6	3/8	11,5	31,5	17	14	10
312.01.10.18	10/8	1/8	8	29,5	14	16	10
312.01.10.14	10/8	1/4	11	32,5	14	16	10
312.01.10.38	10/8	3/8	11,5	33	17	16	10
312.01.10.12	10/8	1/2	14	36	22	16	5
312.01.12.38	12/10	3/8	11,5	34,5	17	18	10
312.01.12.12	12/10	1/2	14	37,5	22	18	5
312.01.15.12	15/12,5	1/2	14	39,5	22	22	5

312.02

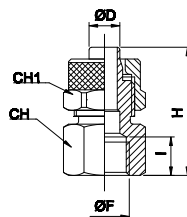
Maschio diritto cilindrico
Cylindrical straight male



CODICE-CODE	D	F	I	H	CH	CH 1	Bag Qty
312.02.05.M5	5/3	M5	4	20	8	8	20
312.02.06.M5	6/4	M5	4	21	8	9	20
312.02.05.18	5/3	1/8	6	23	14	8	20
312.02.06.18	6/4	1/8	6	25,5	14	12	20
312.02.06.14	6/4	1/4	8	28	17	12	20
312.02.06.38	6/4	3/8	9	29	19	12	10
312.02.08.18	8/6	1/8	6	25,5	14	14	10
312.02.08.14	8/6	1/4	8	28	17	14	10
312.02.08.38	8/6	3/8	9	29	19	14	10
312.02.10.18	10/8	1/8	6	27	14	16	10
312.02.10.14	10/8	1/4	8	29,5	17	16	10
312.02.10.38	10/8	3/8	9	30,5	19	16	10
312.02.10.12	10/8	1/2	10	32	24	16	10
312.02.12.38	12/10	3/8	9	32	19	18	10
312.02.12.12	12/10	1/2	10	33,5	24	18	5
312.02.15.12	15/12,5	1/2	10	33,5	24	22	5

312.04

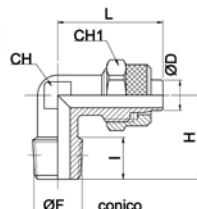
Femmina diritta cilindrica
Cylindrical straight female



CODICE-CODE	D	F	I	H	CH	CH 1	Bag Qty
312.04.05.18	5/3	1/8	8	22,5	14	8	20
312.04.06.18	6/4	1/8	8	25	14	12	20
312.04.06.14	6/4	1/4	11	29	17	12	20
312.04.08.18	8/6	1/8	8	25	14	14	20
312.04.08.14	8/6	1/4	11	29	17	14	10
312.04.08.38	8/6	3/8	11,5	29,5	20	14	10
312.04.10.18	10/8	1/8	8	26,5	14	16	10
312.04.10.14	10/8	1/4	11	30,5	17	16	10
312.04.10.38	10/8	3/8	11,5	31	20	16	10
312.04.10.12	10/8	1/2	14	34,5	24	16	10
312.04.12.38	12/10	3/8	11,5	32,5	20	18	10

312.05

Curva maschio cilindrica
Conical elbow male



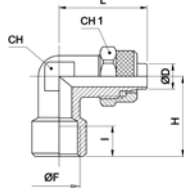
CODICE-CODE	D	F	I	H	L	CH	CH 1	Bag Qty
312.05.04.M5	4/2,7	M5	4	15	19,5	8	8	10
312.05.04.18	4/2,7	1/8	8	17	19,5	8	8	10
312.05.05.18	5/3	1/8	8	17	21,5	8	8	20
312.05.06.18	6/4	1/8	8	17	22,5	8	12	20
312.05.06.14	6/4	1/4	11	20	22,5	10	12	10
312.05.06.38	6/4	3/8	11,5	22,5	23,5	11	12	10
312.05.08.18	8/6	1/8	8	17	22,5	10	14	10
312.05.08.14	8/6	1/4	11	20	22,5	10	14	10
312.05.08.38	8/6	3/8	11,5	22,5	24	11	14	10
312.05.10.18	10/8	1/8	8	18,5	25,5	11	16	10
312.05.10.14	10/8	1/4	11	21,5	25,5	11	16	10
312.05.10.38	10/8	3/8	11,5	22,5	25,5	11	16	10
312.05.12.38	12/10	3/8	11,5	24,5	30	14	18	10
312.05.12.12	12/10	1/2	14	28	30,5	17	18	5
312.05.15.12	15/12,5	1/2	14	28	34	17	22	5

Line 312

Raccorderia a calzamento Quick fittings

312.06

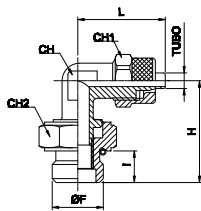
Curva femmina cilindrica
Cylindrical elbow female



CODICE-CODE	D	F	I	H	L	CH	CH 1	Bag Qty
312.06.05.18	5/3	1/8	8	19	21,5	10	8	20
312.06.06.18	6/4	1/8	8	19	22,5	10	12	20
312.06.06.14	6/4	1/4	10,5	23	25	11	12	10
312.06.08.18	8/6	1/8	8	19	22,5	10	14	20
312.06.08.14	8/6	1/4	10,5	23	25	11	14	10
312.06.10.14	10/8	1/4	11	23,5	26	13	16	10
312.06.12.38	12/10	3/8	11,5	28	30,5	17	18	5

312.07

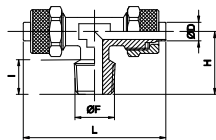
Curva maschio cilindrica girevole
Swivel elbow male with o-ring



CODICE-CODE	D	F	I	H	L	CH	CH 1	CH 2	Bag Qty
312.07.06.18	6/4	1/8	6	22,5	22,5	8	12	14	10
312.07.06.14	6/4	1/4	8	25	23,5	10	12	17	10
312.07.08.18	8/6	1/8	6	22,5	23,5	10	14	14	10
312.07.08.14	8/6	1/4	8	25	23,5	10	14	17	10
312.07.10.14	10/8	1/4	8	25,5	23,5	11	14	17	10

312.09

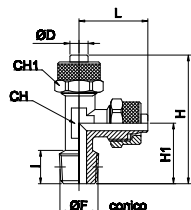
T maschio centrale
"T" conical central male



CODICE-CODE	D	F	I	H	L	CH	CH 1	Bag Qty
312.09.05.18	5/3	1/8	8	17	43	8	8	20
312.09.06.18	6/4	1/8	8	17	45	8	12	10
312.09.06.14	6/4	1/4	11	20,5	45,5	10	12	10
312.09.08.18	8/6	1/8	8	17,5	45,5	10	14	10
312.09.08.14	8/6	1/4	11	20,5	45,5	10	14	10
312.09.08.38	8/6	3/8	11,5	22,5	48	11	14	10
312.09.10.14	10/8	1/4	11	21,5	51	11	16	5
312.09.10.38	10/8	3/8	11,5	22,5	51	11	16	5
312.09.12.38	12/10	3/8	11,5	24,5	60	14	18	5
312.09.12.12	12/10	1/2	14	28	61	17	18	5
312.09.15.12	15/12,5	1/2	14	28	68	17	22	5

312.10

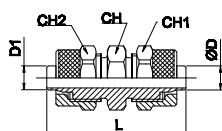
T maschio laterale
"T" conical lateral male



CODICE-CODE	D	F	I	H	H 1	L	CH	CH 1	Bag Qty
312.10.05.18	5/3	1/8	8	38,5	17	21,5	8	8	20
312.10.06.18	6/4	1/8	8	39,5	17	22,5	8	12	10
312.10.06.14	6/4	1/4	11	42,5	20	22,5	10	12	10
312.10.08.18	8/6	1/8	8	40,5	17,5	22,5	10	14	10
312.10.08.14	8/6	1/4	11	43,5	20,5	22,5	10	14	10
312.10.08.38	8/6	3/8	11,5	46,5	22,5	23,5	11	14	10
312.10.10.14	10/8	1/4	11	46,5	21	25,5	11	16	5
312.10.10.38	10/8	3/8	11,5	48	22,5	25,5	11	16	5
312.10.12.38	12/10	3/8	11,5	54,5	24,5	30	14	18	5
312.10.12.12	12/10	1/2	14	58,5	28	30,5	17	18	5
312.10.15.12	15/12,5	1/2	14	62	28	34	17	22	5

312.11

Diritto intermedio
Straight union



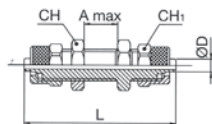
CODICE-CODE	D	D 1	L	CH	CH 1	CH 2	Bag Qty
312.11.05	5/3	5/3	28,5	8	8	8	20
312.11.06	6/4	6/4	34,5	12	12	12	20
312.11.08	8/6	8/6	35	14	14	14	10
312.11.08.06	8/6	6/4	35	14	14	12	10
312.11.10	10/8	10/8	38	14	16	16	10
312.11.12	12/10	12/10	41	17	18	18	5
312.11.15	15/12,5	15/12,5	45,5	22	22	22	5

Line 312

Raccorderia a calzamento Quick fittings

312.12

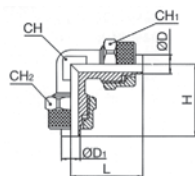
Passaparete intermedio
Bulkhead union



CODICE-CODE	D	CH	CH 1	L	A max	Bag Qty
312.12.05	5/3	9	8	40	8,5	20
312.12.06	6/4	14	12	48	10,5	10
312.12.08	8/6	16	14	48	10,5	10
312.12.10	10/8	17	16	50	8,5	10
312.12.12	12/10	19	18	53	8,5	5
312.12.15	15/12,5	24	22	58	8,5	5

312.13

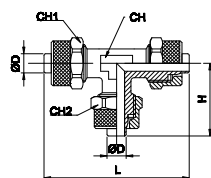
Curva intermedia
Elbow union



CODICE-CODE	D	D 1	H	L	CH	CH 1	CH 2	Bag Qty
312.13.05	5/3	5/3	21,5	21,5	8	8	8	20
312.13.06	6/4	6/4	21,5	21,5	8	12	12	20
312.13.08	8/6	8/6	22,5	22,5	10	14	14	10
312.13.08.06	8/6	6/4	22,5	22,5	10	14	12	10
312.13.10	10/8	10/8	25,5	25,5	11	16	16	10
312.13.12	12/10	12/10	30	30	14	18	18	5
312.13.15	15/12,5	15/12,5	34	34	17	22	22	5

312.14

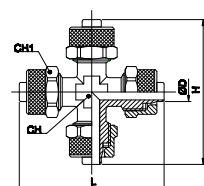
T intermedio
"T" union



CODICE-CODE	D	D 1	H	L	CH	CH 1	CH 2	Bag Qty
312.14.05	5/3	5/3	21,5	43	8	8	8	20
312.14.06	6/4	6/4	22,5	45	8	12	12	10
312.14.08	8/6	8/6	22,5	45	10	14	14	10
312.14.08.06	8/6	6/4	22,5	45	10	14	12	10
312.14.10	10/8	10/8	25,5	51	11	16	16	5
312.14.12	12/10	12/10	30	60	14	18	18	5
312.14.15	15/12,5	15/12,5	34	68	17	22	22	5

312.16

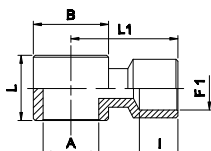
Croce intermedia
Cross union



CODICE-CODE	D	H	L	CH	CH 1	Bag Qty
312.16.05	5/3	43	43	8	8	10
312.16.06	6/4	45	45	8	12	10
312.16.08	8/6	45	45	10	14	10
312.16.10	10/8	51	51	11	16	5

312.23

Anello femmina
Female banjo



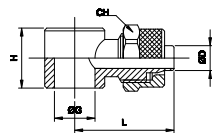
CODICE-CODE	F	F 1	I	H	L	Bag Qty
312.23.18	1/8	1/8	8	14,5	20	10
312.23.14	1/4	1/4	10	17,5	24,5	10

Line 312

Raccorderia a calzamento Quick fittings

312.17

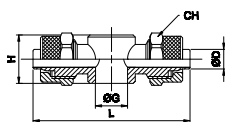
Anello singolo
Single banjo



CODICE-CODE	D	F	H	L	CH 1	Bag Qty
312.17.04.M5	4/2,7	M5	9	15,8	8	10
312.17.04.18	4/2,7	1/8	14,5	21,3	8	10
312.17.05.M5	5/3	M5	9	17	8	10
312.17.05.18	5/3	1/8	14,5	22,5	8	20
312.17.06.M5	6/4	M5	9	18	9	20
312.17.06.18	6/4	1/8	14,5	24	12	10
312.17.06.14	6/4	1/4	14,5	26	12	10
312.17.08.18	8/6	1/8	14,5	24	14	10
312.17.08.14	8/6	1/4	14,5	26	14	10
312.17.10.14	10/8	1/4	14,5	27,5	16	10

312.18

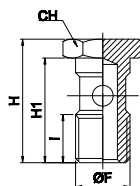
Anello doppio
Double banjo



CODICE-CODE	D	F	H	L	CH 1	Bag Qty
312.18.04.18	4/2,7	1/8	14,5	42,6	8	10
312.18.05.18	5/3	1/8	14,5	45	8	10
312.18.06.18	6/4	1/8	14,5	48	12	10
312.18.06.14	6/4	1/4	14,5	52	12	10
312.18.08.18	8/6	1/8	14,5	48	14	10
312.18.08.14	8/6	1/4	14,5	52	14	10
312.18.10.14	10/8	1/4	14,5	55	16	5

312.19

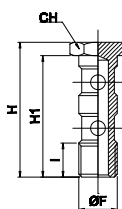
Vite cava singola
Single screw



CODICE-CODE	F	I	H	H 1	CH 1	Bag Qty
312.19.M5	M5	6	18	14,5	8	10
312.19.18	1/8	8	27	23	14	20
312.19.14	1/4	11	29,5	25	17	10

312.21

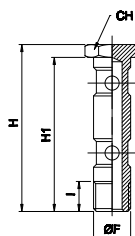
Vite cava doppia
Double screw



CODICE-CODE	F	I	H	H 1	CH 1	Bag Qty
312.21.18	1/8	8	43	39	14	10
312.21.14	1/4	11	45,5	41	17	10

312.22

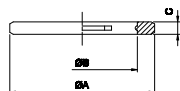
Vite cava doppia lunga
Longer double screw



CODICE-CODE	F	I	H	H 1	CH 1	Bag Qty
312.22.18	1/8	8	56	52	14	10
312.22.14	1/4	11	58,5	54	17	10

312.25

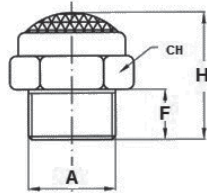
Rondella in plastica
Indented nylon washer



CODICE-CODE	type	A	B	C	Bag Qty
312.25.M5	M5	8	5,2	1,3	10
312.25.18	1/8	14	10	1,5	20
312.25.14	1/4	18	13,5	1,5	20

391.01

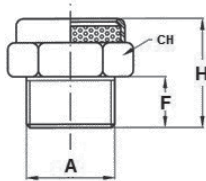
Silenziatore SFE
SFE silencer



CODICE-CODE	A	F	H	CH	Bag Qty
391.01.M5	M5	4	8	8	10
391.01.18	1/8	6	15	13	10
391.01.14	1/4	7	18	16	10
391.01.38	3/8	8	20	19	5
391.01.12	1/2	10	22	24	5

391.02

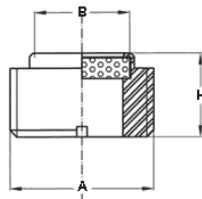
Silenziatore SEP
SEP silencer



CODICE-CODE	A	F	H	CH	Bag Qty
391.02.M5	M5	5	12	8	10
391.02.18	1/8	6	14	13	10
391.02.14	1/4	7	17	16	10
391.02.38	3/8	8	18	19	5
391.02.12	1/2	10	20	24	5

391.03

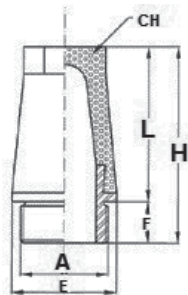
Silenziatore SP
SP silencer



CODICE-CODE	A	B	H	Bag Qty
391.03.18	1/8	6	5	10
391.03.14	1/4	8	6	10
391.03.38	3/8	10	7	5
391.03.12	1/2	15	8	5

391.04

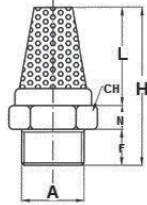
Silenziatore SET
SET silencer



CODICE-CODE	A	E	F	L	H	CH	Bag Qty
391.04.M5	M5	8,5	5	15	20	7,5	10
391.04.18	1/8	11,5	4,5	13	17,5	8	10
391.04.14	1/4	15	6	18	24	10	10
391.04.38	3/8	19	7	24	31	13	5
391.04.12	1/2	23	8	29	37	14	5

391.06

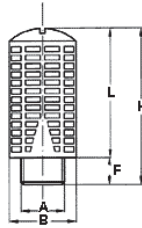
Silenziatore SBE
SBE silencer



CODICE-CODE	A	N	F	L	H	CH	Bag Qty
391.06.M5	M5	3	4	9	17	8	10
391.06.18	1/8	3,5	5,5	15	23	12	10
391.06.14	1/4	4	7	18	29	15	10
391.06.38	3/8	4,5	8	25	37	19	5
391.06.12	1/2	5,5	10	29	45	22	5

391.08

Silenziatore SPL
SPL silencer



CODICE-CODE	A	B	F	L	H	Bag Qty
391.08.18	1/8	15	6	26,5	32,5	10
391.08.14	1/4	19,5	8	35	43	10
391.08.38	3/8	24,5	11	47	58	5
391.08.12	1/2	24,5	11	47	58	5

391.10

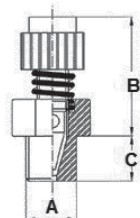
Silenziatore PSU
PSU-silencer



CODICE-CODE	A	L	F	CH	D	Bag Qty
391.10.18	1/8	40	7	14	16	10
391.10.14	1/4	65	10,8	18	21	10
391.10.38	3/8	84	13	21	25	5
391.10.12	1/2	94	14	26	30	5

391.07

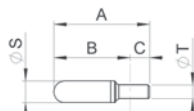
Regolatore di scarico silenziato
SVE silencer - flow regulator



CODICE-CODE	A	B min	B max	C	Bag Qty
391.07.18	1/8	20	22	6	5
391.07.14	1/4	22	24	8	5
391.07.38	3/8	25	28	10	5
391.07.12	1/2	26	29	11	5

1601A

Silenziatori PE
PE silencers



CODICE-CODE	ØD	A	B	C	ØS
1601A00064	6	45	28,5	16,5	12,5
1601A00065	8	43	23,5	19,5	13,5
1601A00072	10	57	37	20	15,6
1601A00066	12	80	58	22	18,5

Line Manometri Gauges

STANDARD



CODICE-CODE	SCALA		ØA	B	CH
	BAR	PSI			
A38.00.00026*	0 ÷ 12	0 ÷ 175	40	G 1/8	14
A38.00.00055*	0 ÷ 6	0 ÷ 85	40	G 1/8	12
A38.00.00114*	0 ÷ 2,5	0 ÷ 36	40	G 1/8	12
A75.01.00010*	0 ÷ 12	0 ÷ 175	50	G 1/8	14
A75.01.00011	0 ÷ 6	0 ÷ 85	50	G 1/8	14
A95.01.00026*	0 ÷ 12	0 ÷ 175	63	G 1/4	14

* versione personalizzata Aircomp
* Aircomp customized version

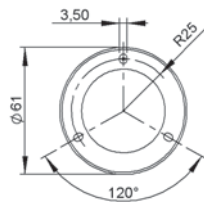
MINI



CODICE-CODE	SCALA		ØA	B	CH
	BAR	PSI			
A35.01.00035*	0 ÷ 6	0 ÷ 87	25	G 1/8	11
A35.01.00025*	0 ÷ 12	0 ÷ 174	25	G 1/8	11

* versione personalizzata Aircomp
* Aircomp customized version

FLANGIATO



CODICE-CODE	SCALA		B
	BAR	PSI	
A38.00.00119	0 ÷ 2,5	0 ÷ 36	G 1/8
A38.00.00116	0 ÷ 6	0 ÷ 87	G 1/8
A38.01.00118	0 ÷ 12	0 ÷ 174	G 1/8

