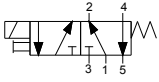


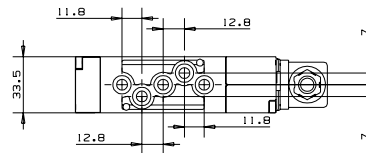
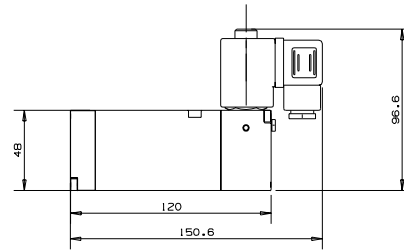
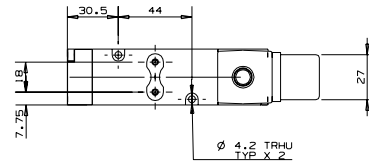
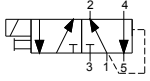
# PNEUMATIC VALVES | General Purpose

## BC 1/4" Base Mounted Valves | Solenoid Operated

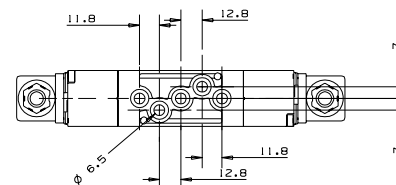
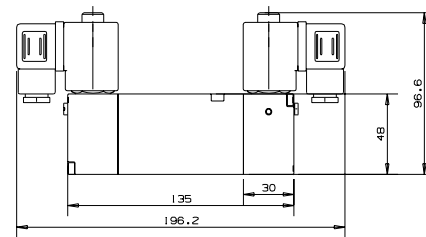
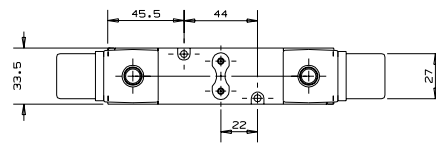
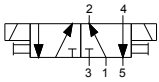
### KBCS5-S | Sol-Spring Return



### KBCS5-DF | Sol-Differential



### KBCS5-D | Sol-Sol



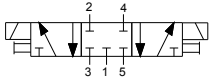
### How to Order

KBCS5	TYPE	MANUAL OVERRIDE	COIL VOLTAGE	POWER	CONNECTOR		
	Sol-Spring <b>S</b>	None	0	without 0	without 0		
	Sol-Dif <b>DF</b>	Plastic	1	6	1		
	Sol-Sol <b>D</b>	Brass slot	2 <sup>(1)</sup>	12	2		
		non-locking	24	3	AC	1	
		St.st knob	3 <sup>(1)</sup>	48	4	8W50Hz	2
		locking	110	5	AC	2	
		St.st knob	4 <sup>(1)</sup>	120	6	8W60Hz	3
			230	7	DC 10W	3	
			240	8			
			other	9			

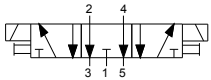
(1) Special order

# BC 1/4" Base Mounted Valves | Solenoid Operated

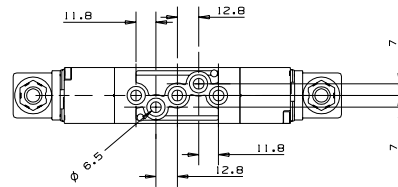
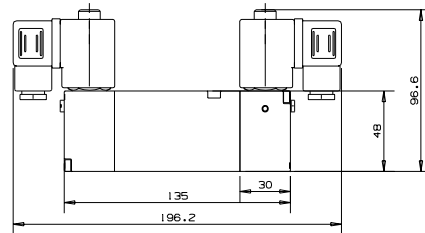
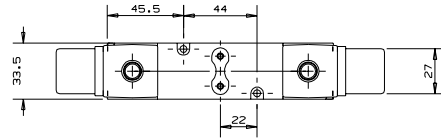
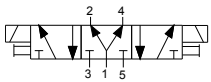
## KBCS53-P | 3 Position Closed Center Sol-Sol



## KBCS53-U | 3 Position Exhaust Center Sol-Sol



## KBCS53-Y | 3 Position Pressure Center Sol-Sol

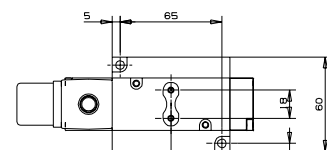
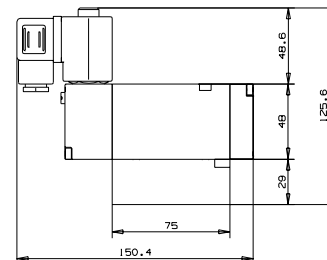
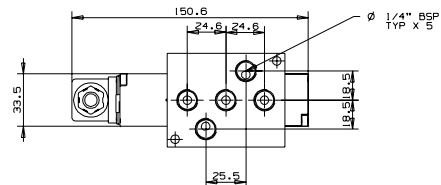


### How to Order

KBCS53	FUNCTION	MANUAL OVERRIDE	COIL VOLTAGE	POWER	CONNECTOR
	Closed Center <b>P</b>	None	0	without	0
		Plastic	1	6	1
	Exhaust Center <b>U</b>	Brass slot	2 <sup>(1)</sup>	12	2
		non-locking	3 <sup>(1)</sup>	24	3
	Pressure Center <b>Y</b>	St.st knob	4	48	4
		locking	5	110	5
		St.st knob	4 <sup>(1)</sup>	120	6
				230	7
				240	8
				other	9

(1) Special order

## BB | Single Base Mounted type Bottom Ported



### How to Order

BB

\* Model is for demonstration purposes only  
\*\* All combinations of valves are available

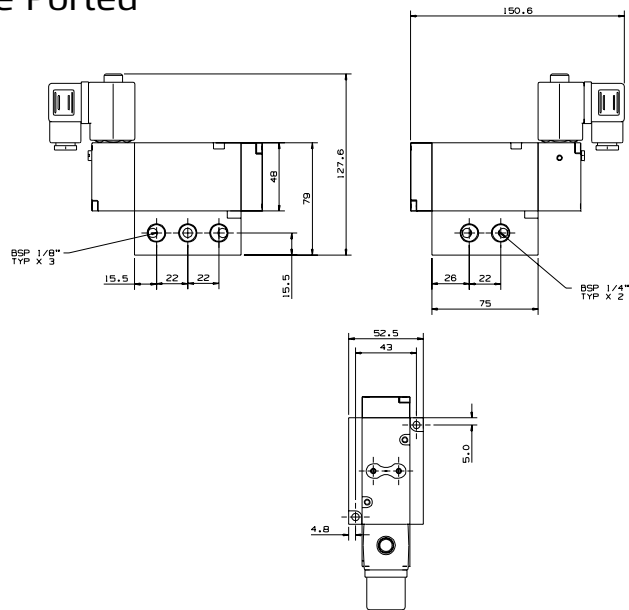
# PNEUMATIC VALVES | General Purpose

## BC 1/4" Base Mounted Valves | Mechanical/Air/Solenoid Operated

### BS | Single Base Mounted type | Side Ported



\* Model is for demonstration purposes only  
\*\* All combinations of valves are available

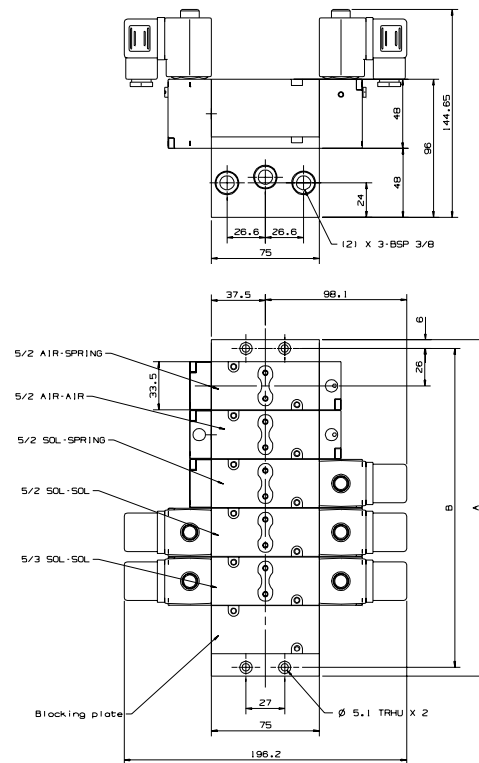
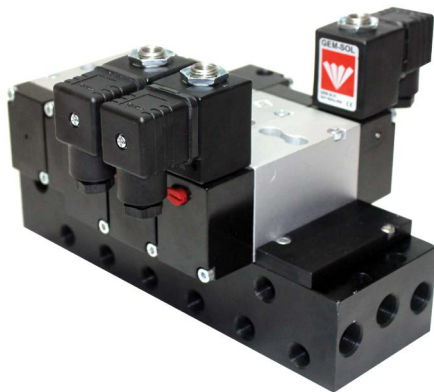


#### How to Order

BS

### BC-BM | Manifold

No. of sections : 2-4-6-8-10-11



#### How to Order


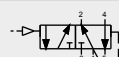
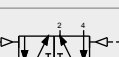
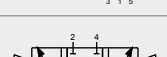

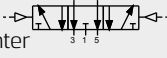
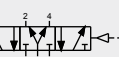

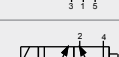
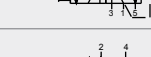
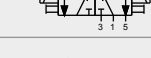

BC	-	BM	-	No. OF STATIONS
				2
				4
				6
				8
				10
				11

No. of stations	A (mm)	B (mm)
2	98	86
4	166	154
6	234	222
8	302	290
10	370	358
11	404	392

Manifold Specification Sheet

Manifold Model : BC-BM-□

Mark required stations with an "x"

VALVE DESCRIPTION	* STATIONS					
	2	4	6	8	10	11
Air-Spring 						
Air-Dif 						
Air-Air 						
Air-Air 3 Position Closed Center 						
Air-Air 3 Position Exhaust Center 						
Air-Air 3 Position Pressure Center 						
Sol-Spring 						
Sol-Dif 						
Sol - Sol 						
Sol - Sol 3 Position Closed Center 						
Sol-Sol 3 Position Exhaust Center 						
Sol-Sol 3 Position Pressure Center 						

\* Station No.1 starts from the left side of the manifold