

GEM-SOL® | GEM-BL



Latch coil

Technical Data

Coil winding insulation	H 180°C
Temperature range	Coil: -20°C to 150°C Ambient: -20°C to 70°C
Electrical connection	<ul style="list-style-type: none"> • AMP pins, DIN 46242, 2 poles + 1 earth • 2 flying leads, 18 AWG (0.75mm²), 330 mm length
Connector	<ul style="list-style-type: none"> • DIN 43650 • PG9 or 1/2" NPT * Max. tightening torque for the connector screw: 0.5 Nm
Assembly	In any position
Coil fixing	One nut G1/4" hexagonal 19mm
Typical pulse time	30-50ms
Impregnation	Optional
Standard / Certification	CE
Standard protection class	IP65 with connector * Option: IP68 (please refer to GEM-BP coil)

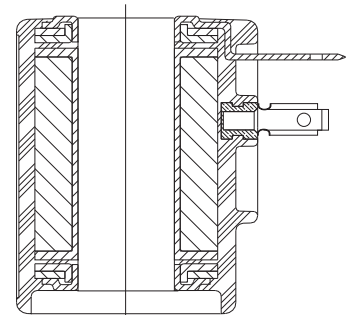
- The coil should not be energized without being assembled on the operator
- The coil, including its magnetic circuit and permanent magnets, is encapsulated in high temperature resistant nylon to withstand humidity and meet heavy duty requirements.



When ordering for a new application, please inform us of your requirements according to the table below. This will enable us to determine the most suitable coil.

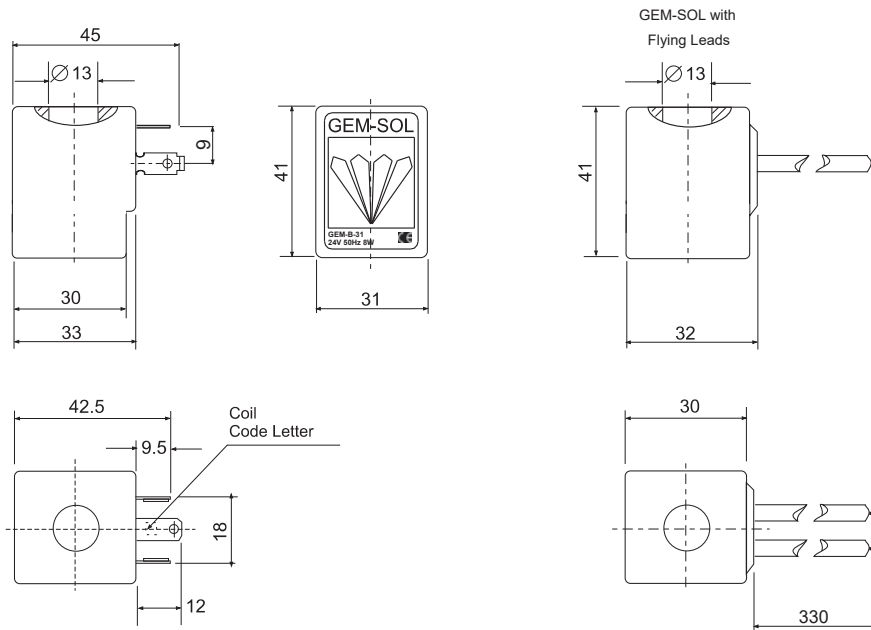
VOLTAGE	OPERATING METHOD	MAX CURRENT [A] ON COIL	CAPACITOR [µF]	SWITCHING TIME [ms]
3	Direct	≤2	None	≤25
6	Capacitor	≤1	2200	≤50
9		≤0.5	4700	≤100
12		≤0.1	other	other
24		other		
230				
Other				

Example: 12V DC, Capacitor, ≤1, 4700, ≤50ms



GEM-SOL® | GEM-BL | Latch coil

Dimensions



Operation Voltage

LATCH TYPE	Ω	Voltage
LDO	2	6 - 10.5
IL	5	9 - 14
EL	13	14.5 - 20
OL	20	18 - 29
DL	53	30 - 48

How to Order

GEM-BL	-	LATCH TYPE ⁽¹⁾	CONNECTOR
2 Ω	LDO	without	0
5 Ω	IL	with	1
13 Ω	EL	flying leads coil	4
20 Ω	OL	with 1/2" Hub	5
53 Ω	DL	connector with moulded cable	7
		other	9

Example: GEM-BL-LD01

GEM-SOL® GEM-BL Latch coil, 2 Ω latch with connector

(1) Choose latch type according to which latch system you have

* To order coils manufactured according to your specific requirements, please contact our technical sales department