

# GEM-SOL® | GEM-BL

## Latch Coil

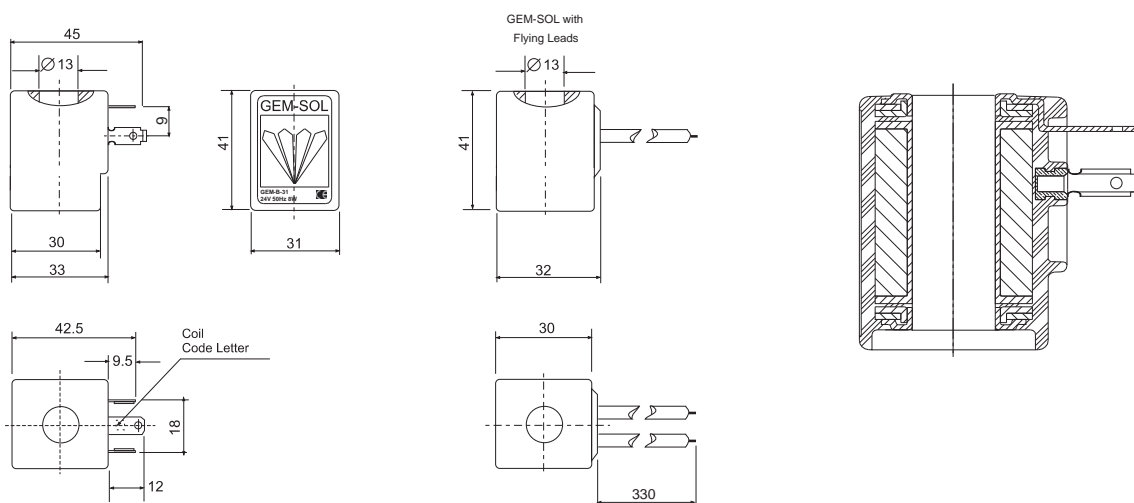
### Technical Data

Coil winding insulation	H 180°C
Temperature range	<b>Coil</b> : -20°C to 150°C   <b>Ambient</b> : -20°C to 70°C
Electrical connection	<ul style="list-style-type: none"> <li>• AMP pins, DIN 46242, 2 poles + 1 earth</li> <li>• 2 flying leads, 18 AWG (0.75mm<sup>2</sup>), 330 mm length</li> </ul>
Connector	<ul style="list-style-type: none"> <li>• DIN 43650</li> <li>• PG9 or 1/2" NPT</li> <li>* Max. tightening torque for the connector screw : 0.5 Nm</li> </ul>
Assembly	In any position
Coil fixing	One nut G1/4" hexagonal 19mm
Typical pulse time	30~50ms
Impregnation	Optional
Standard / Certification	CE, RU
Standard protection class	IP65 with connector * Option : IP68 (please refer to GEM-BP Coil)

- The coil should not be energized without being assembled on the operator
- \* The coil, including its magnetic circuit and permanent magnets, is encapsulated in high temperature resistant nylon to withstand humidity and meet heavy duty requirements.



### Dimensions



### How to Order

GEM-BL -	LATCH TYPE <sup>(1)</sup>	CONNECTOR	
2Ω	LDO	with	1
5Ω	IL	<b>flying leads coil *</b>	<b>4</b>
13Ω	EL	with 1/2" Hub	5
20Ω	OL	connector with moulded cable	7
53Ω	DL	other	9

\* **SPECIAL OPTIONS** | Extended lead times, Non-stock items, MOQ may be applicable

#### Example : GEM-BL-LD01

GEM-SOL® GEM-BL Latch Coil, 2Ω with connector.

(1) Choose latch type according to which latch system you have.

\* To order coils manufactured according to your specific requirements, please contact our technical sales department.

When ordering for a new application, please inform us of your requirements according to the table below. This will enable us to determine the most suitable coil.

VOLTAGE	OPERATING METHOD	MAX CURRENT [A] ON COIL	CAPACITOR [μF]	SWITCHING TIME [ms]
3	Direct	≤2	None	≤25
6	Capacitor	≤1	2200	≤50
9		≤0.5	4700	≤100
12		≤0.1	other	other
24		other		
230				
Other				

**Example : 12V DC, Capacitor, ≤1,4700, ≤50ms**