

# GEM-FLOW™ | G75

## Pressure Reducing 3/4" - 2" 2 Way NC

### Technical Data

Solenoid	Supplied with 3 Way NO 12mm G75 solenoid or G75-A3P 2.6 mm latch
Assembly	Supplied with finger filter
Pressure	<ul style="list-style-type: none"> <li>Pilot pressure must be equal to, or higher than line pressure</li> <li>A minimum pressure differential of 1 bar is required</li> </ul>

- For technical information, refer to G75-S | Electric 3/4" - 2" 2 Way NC

### Voltage & Power Consumption

	AC (W) 50 Hz	DC(W)
V	2	4.5
12	•	•
24	•	•

- Available options

### Voltage & Current

#### AC & DC

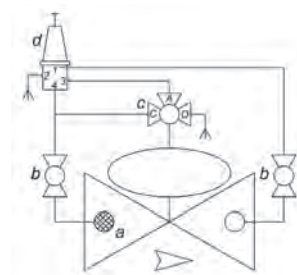
Solenoid	Voltage	Inrush [A]	Holding [A]
2 Way 50 Hz	+10%	0.3	0.19
2 Way 60 Hz		0.2	0.14
3 Way 50/60 Hz *		0.125	0.125
DC	n-20%	4.5W	

- \* Except 24V AC without Diode



Pressure reducing | 0.5-5 bar / 1-10 bar

### Pressure Reducing | PR



### Latch Coil Resistance vs Input Voltage

#### Recommendations chart

G75-A Latch	
Resistance [Ω]	Input voltage range [V]
4	6 - 9
9	12 - 14
12	14 - 16
23	18 - 21
G75-A3P Latch	
Resistance [Ω]	Input voltage range [V]
1	8 - 12
4	12 - 18
9	18 - 24

### How to Order

G75	TYPE	PORT	FUNCTION	FLOW CONTROL	VOLTAGE (3)	WIRES	PRESSURE RANGE
	Pressure Reducing PR	3/4" BSPT 50	2W NC 1	with 5	No solenoid (hydraulic) 0	two null	0.5-5 bar Y
	With Manual Selector PRM	3/4" NPT 51		without(1) 6	24V AC 1	three(2) a	1-10 bar G
	Electric Without Manual Selector PREL	1" BSPT 60			24V AC w/out Diode 1R		
	Electric With Manual Selector PRELM	1" NPT 61			12V AC 3		
		1-1/2" BSPT 70			12V DC 4		
		1-1/2" NPT 71			24V DC 5		
		2" BSPT 80			23Ω 6		
		2" NPT 81			4Ω B		
					9Ω C		
					12Ω D		
					1Ω (4) PA		
					4Ω (4) PB		
					9Ω (4) PC		

#### Example: G75-PR-70151Y

GEM-FLOW™ G75 pressure reducing valve, 1-1/2" BSPT, 2W NC with flow control, 24V AC, two wires, 0.5-5 bar

- (1) For 3/4", 1" valves only
- (2) For Latch only
- (3) For Latch: Refer to Latch Coil Resistance vs Input Voltage | Recommendations chart
- (4) For G75-A3P Latch

\* To order valves manufactured according to your specific requirements, please contact our technical sales department