

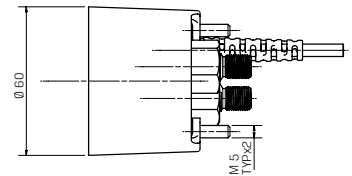
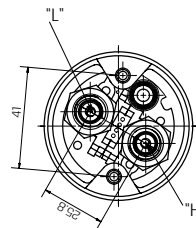
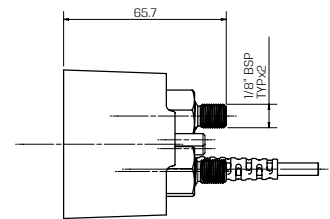
## GEM-FLOW™ | G75-ADP

### Baccara Analog Differential Pressure Sensor

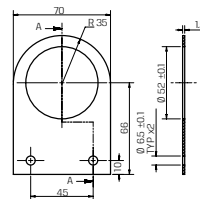
- Differential pressure to current transducer
- Suitable to work with both media - air and liquid
- Main application: analog sensor for filters backwash

#### Technical Data

Mechanical	<ul style="list-style-type: none"> <li>• Operating temperature: -10°C to 60°C (no freezing)</li> <li>• Outdoor UV protection</li> <li>• Measuring pressure range: 0-7 bar (0-101.5 PSI)</li> <li>• "H" proof pressure: 14 bar (203 PSI)</li> <li>• "H" pressure must be <math>\geq</math> "L" pressure</li> </ul>
Electrical	<ul style="list-style-type: none"> <li>• Power supply: 5V DC</li> <li>• RED: (+) 5V</li> <li>• BLACK: (-) 5V</li> <li>• ORANGE: analog output</li> <li>• Analog output value: 0.2V to 4.7V, [V out = (0.006429xKpa+0.2)± Error]</li> <li>• Output accuracy: 2.5% of full scale</li> </ul>
Mounting	<ul style="list-style-type: none"> <li>• 2" (52mm) diameter</li> <li>• 2ft (60cm) 3 wires cable</li> <li>• Pressure ports 1/8" BSP/NPT (male)</li> <li>• High pressure port is marked by the letter "H" on the housing</li> <li>• Connect high pressure before low pressure</li> <li>• Disconnect low pressure before high pressure</li> </ul>
Standard protection class	<ul style="list-style-type: none"> <li>• IP66</li> </ul>



Optional Mounting Bracket



#### How to Order

G75-ADP	-	TYPE	MOUNTING BRACKET	
		Stand alone	1	without 0 with 1

#### Example: G75-ADP-10

GEM-FLOW™ G75-ADP Baccara Analog Differential Pressure sensor, stand alone, without mounting bracket

\* To order controllers manufactured according to your specific requirements, please contact our technical sales department