

PNEUMATIC VALVES | General Purpose

BC Series

BC 1/4" Body Ported Valves

- 5 port valves - mechanical, air and solenoid
- 3 port (only Sol-Spring)
- Port size : 1/4" BSP
- Can be used as an independent valve or installed on a manifold.

Technical Data

Fluid	Air / Inert gas
Operation pressure	1.5 to 10 bar
Ambient temperature	-5° to 55° C (option for FKM seals) up to 150° C
Lubrication	Not required (use turbine oil class ISO VG32 if lubricated)
Port size	1/4" BSP
Flow rate (Air)	1,100 L/min (at 5.5 bar)



Mechanically Operated



Air Operated



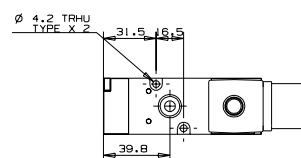
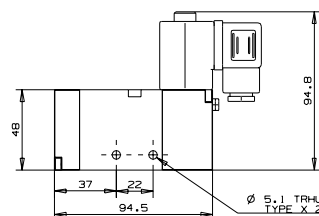
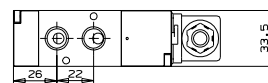
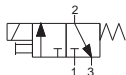
Solenoid Operated



Manifold

BC | Solenoid Operated

BCS3 | Sol-Spring

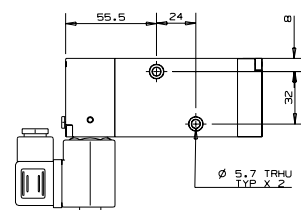
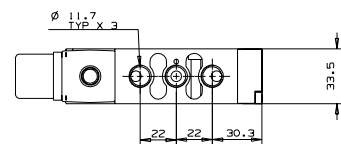
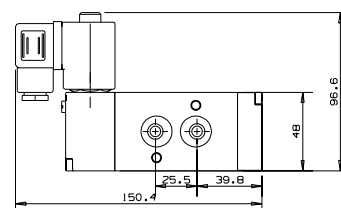
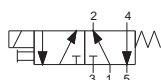


How to Order

BCS3	FUNCTION	MANUAL OVERRIDE	COIL VOLTAGE	POWER	CONNECTOR
NC	1	None	0	without	0
NO	2	Plastic	1	6	1
		Brass slot	2 ⁽¹⁾	12	2
		non-locking	24	3	AC
		St.st knob	48	4	8W50Hz
		locking	110	5	8W60Hz
		St.st knob	120	6	DC 10W
			230	7	3
			240	8	with LED
			other	9	with LED + surge protection
					with 1/2" hub

(1) Special order

BCS-N | NAMUR type Sol-Spring



How to Order

BCS	N	MANUAL OVERRIDE	COIL VOLTAGE	POWER	CONNECTOR
		None	0	without	0
		Plastic	1	6	1
		Brass slot	2 ⁽¹⁾	12	2
		non-locking	24	3	AC
		St.st knob	48	4	8W50Hz
		locking	110	5	8W60Hz
		St.st knob	120	6	DC 10W
			230	7	3
			240	8	with LED
			other	9	with LED + surge protection
					with 1/2" hub

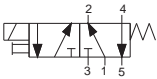
(1) Special order

PNEUMATIC VALVES | General Purpose

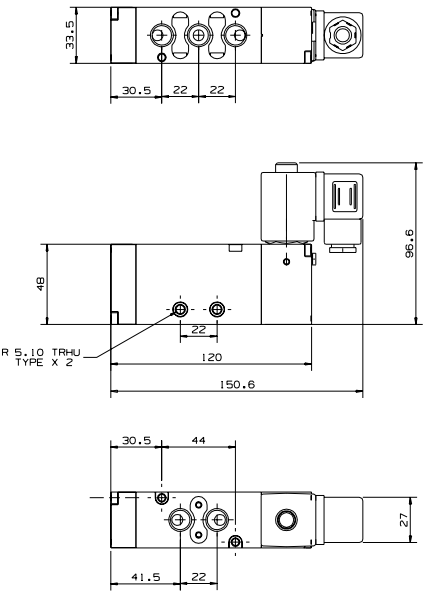
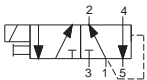
BC Series | 1/4" Body Ported Valves

BC | Solenoid Operated

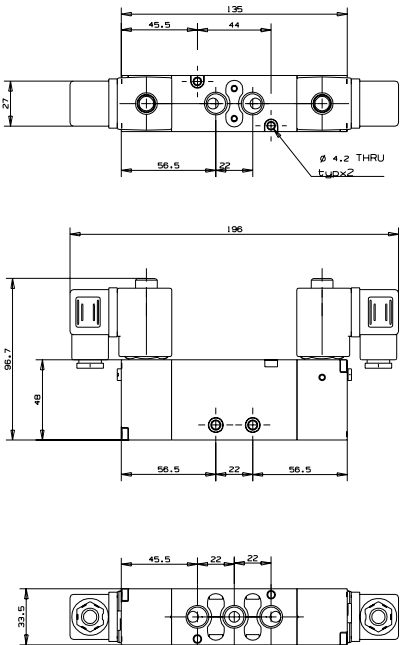
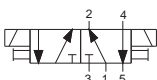
BCS5-S | Sol-Spring Return



BCS5-DF | Sol-Differential



BCS5-D | Sol-Sol



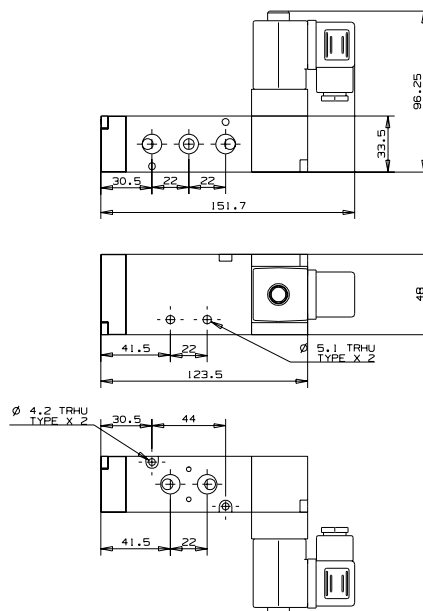
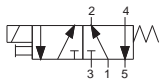
How to Order

BCS5	TYPE	MANUAL OVERRIDE	COIL VOLTAGE	POWER	CONNECTOR
	Sol-Spring S	None	0	without	0
	Sol-Dif DF	Plastic	1	6	1
	Sol-Sol D	Brass slot	2 ⁽¹⁾	12	2
		non-locking	24	3	AC
		St.st knob	48	4	8W50Hz
		locking	110	5	AC
		St.st knob	120	6	8W60Hz
			230	7	DC 10W
			240	8	
			other	9	

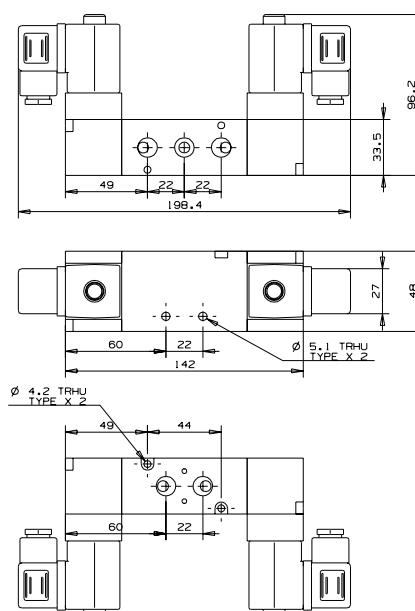
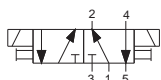
(1) Special order

BC | Solenoid Operated

BCS5-90S | Coil position 90° Sol-Spring



BCS5-90D | Coil position 90° Sol-Sol



How to Order

BCS5	90□	MANUAL OVERRIDE	COIL VOLTAGE	POWER	CONNECTOR
Sol-Spring	S	None	0	without	0
Sol-Sol	D	Plastic	1	6	1
		Brass slot	2 ⁽¹⁾	12	2
		non-locking	24	3	
		St.st knob	3 ⁽¹⁾	48	4
		locking	110	5	
		St.st knob	4 ⁽¹⁾	120	6
			230	7	
			240	8	
			other	9	

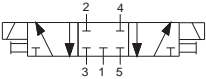
(1) Special order

PNEUMATIC VALVES | General Purpose

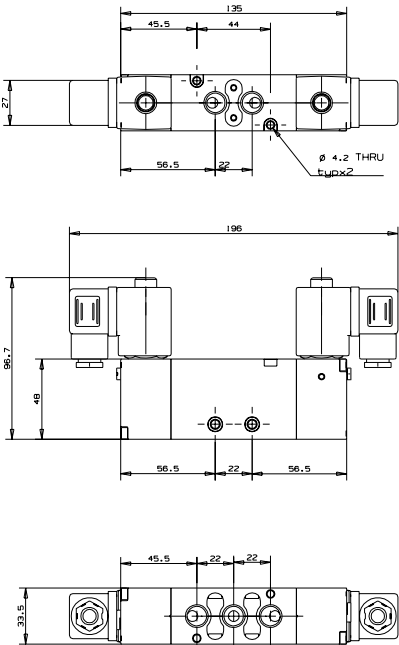
BC Series | 1/4" Body Ported Valves

BC | Solenoid Operated

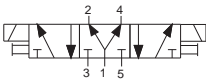
BCS53-P | 3 Position Closed Center Sol-Sol



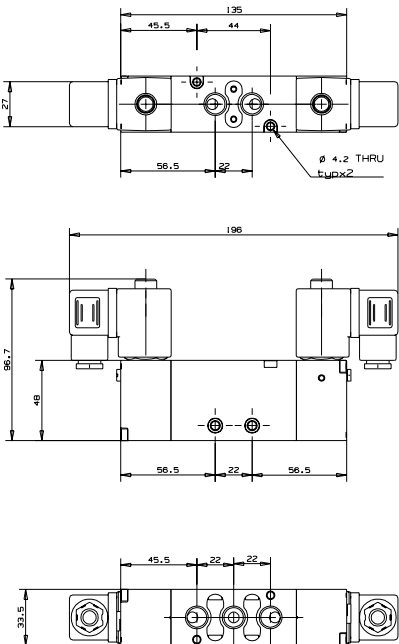
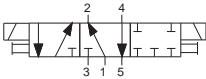
BCS53-U | 3 Position Exhaust Center Sol-Sol



BCS53-Y | 3 Position Pressure Center Sol-Sol



BCS53-A | 3 Position Shelf Control Sol-Sol



How to Order

BCS53	FUNCTION	MANUAL OVERRIDE	COIL VOLTAGE	POWER	CONNECTOR
	Closed Center P	None 0	without 0	none 0	without 0
	Center P	Plastic 1	6 1	AC 1	standard 1
	Exhaust Center U	Brass slot 2 ⁽¹⁾	12 2	8W50Hz 1	with LED 2
	Center U	non-locking 3 ⁽¹⁾	24 3	AC 2	with LED + surge protection 3
	Pressure Center Y	St.st knob 4 ⁽¹⁾	48 4	8W60Hz 2	with LED + surge protection 3
	Center Y	locking 4 ⁽¹⁾	110 5	DC 10W 3	with 1/2" hub 4
	Shelf Control A	St.st knob 4 ⁽¹⁾	120 6		
	Control A		230 7		
			240 8		
			other 9		

(1) Special order