

PNEUMATIC VALVES | General Purpose

BC Series

BC 1/4" Body Ported Valves

- 5 port valves - mechanical, air and solenoid
- 3 port (only Sol-Spring)
- Port size : 1/4" BSP
- Can be used as an independent valve or installed on a manifold.

Technical Data

Fluid	Air / Inert gas
Operation pressure	1.5 to 10 bar
Ambient temperature	-5° to 55° C (option for FKM seals) up to 150° C
Lubrication	Not required (use turbine oil class ISO VG32 if lubricated)
Port size	1/4" BSP
Flow rate (Air)	1,100 L/min (at 5.5 bar)



Mechanically Operated



Air Operated



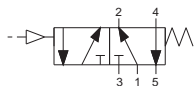
Solenoid Operated



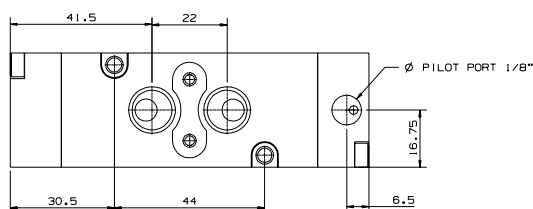
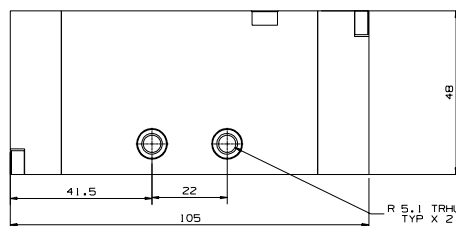
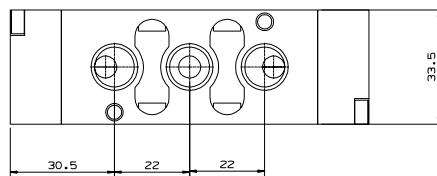
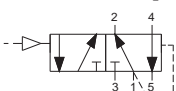
Manifold

BC | Air Operated

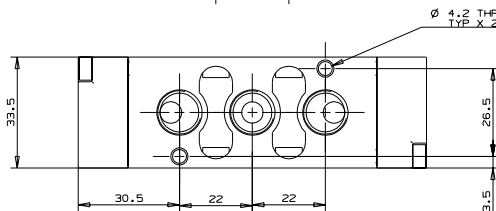
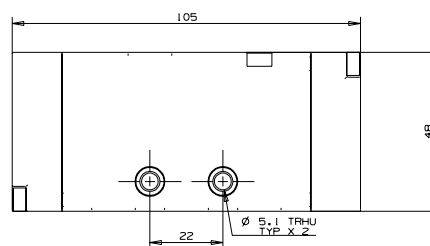
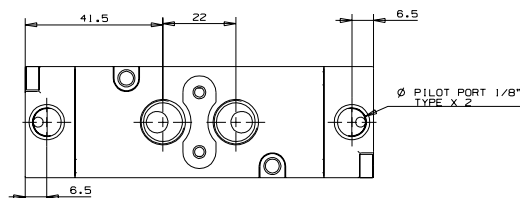
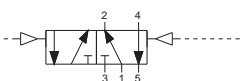
BCA5-S | Air-Spring



BCA5-DF | Air-Differential



BDA5-D | Air-Air



How to Order

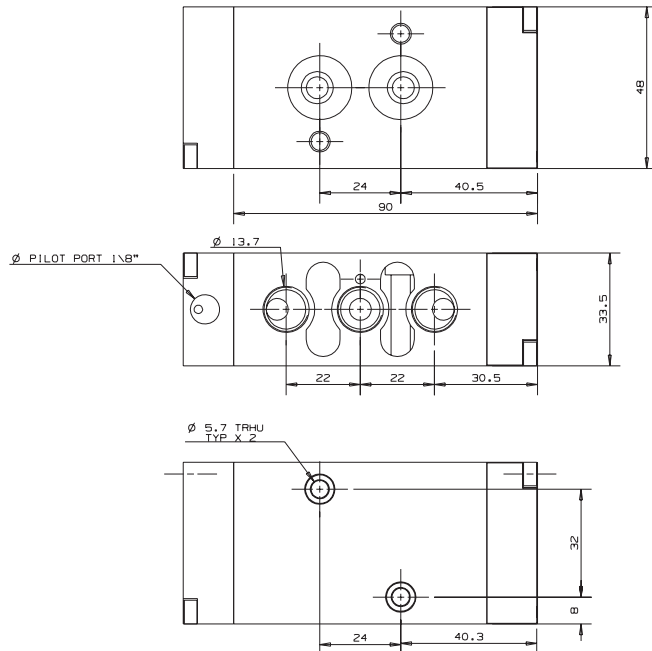
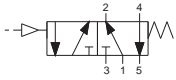
BCA5	-	TYPE
		Air-Spring S
		Air-Dif DF
		Air-Air D

PNEUMATIC VALVES | General Purpose

BC Series | 1/4" Body Ported Valves

BC | Air Operated

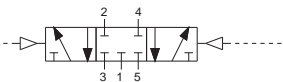
BCA-N | NAMUR type Air-Spring



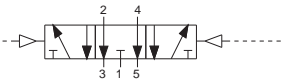
How to Order

BCA - N - S

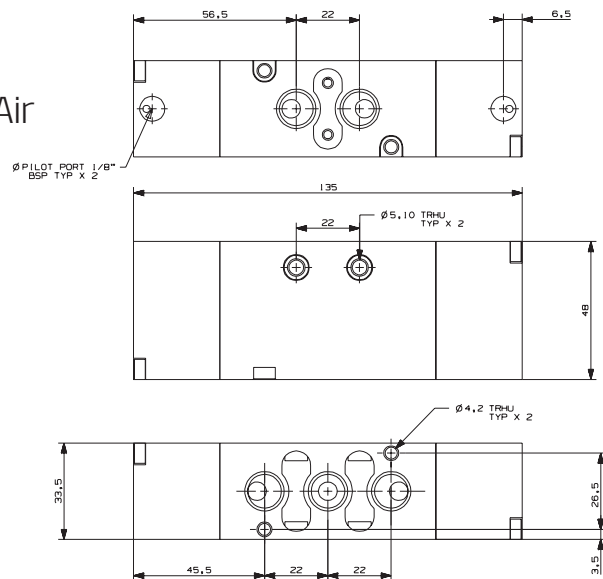
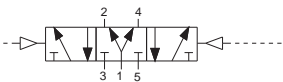
BCA5-P | 3 Position Closed Center Air-Air



BCA5-U | 3 Position Exhaust Center Air-Air



BCA5-Y | 3 Position Pressure Center Air-Air



How to Order

BCA5	-	FUNCTION
		Closed Center P
		Exhaust Center U
		Pressure Center Y